



YU ON THE RISE

PRESIDENT'S REPORT 2023



YU ON THE RISE

PRESIDENT'S REPORT 2023



3

MESSAGE FROM
THE PRESIDENT

4

YU FACTS & STATS

7

A YEAR OF RECORD
ENROLLMENT



13

YU STUDENTS
ARE LEVELING UP

17

YU GRADUATE
SCHOOLS

23

FACULTY
RESEARCH

31

YU GLOBAL

33

OUR FIVE CORE
TORAH VALUES



41

BUILDING A BETTER
UNIVERSITY

46

RECORD SUCCESS OF
RISE UP CAMPAIGN

49

HONOR ROLL
OF DONORS

To jump to specific sections, please click on the numbers above.

Message From The President



RABBI DR. ARI BERMAN

Dear Friend,

I am pleased to present our annual President’s Report, attesting to the historic rise across our university in 2023. We continue to see substantial growth in enrollment, groundbreaking programing, new and improved facilities and cutting-edge research. This has been an extraordinary year, filled with accomplishments that reflect our status as the world’s flagship Jewish university, and that distinguish us in the world of universities.

Bucking all national trends, our enrollment across the university is soaring, with graduate enrollment increasing by nearly 90% during the last seven years and undergraduate enrollment increasing by over 20% from 2021 to 2022, which represents the largest incoming undergraduate class in 20 years. Students are drawn to our university for myriad reasons, including our top-tier faculty, which is internationally recognized for their groundbreaking research.

In these pages, you will also read about our students’ success upon graduation, as well as the successes of our Rise Up campaign, which has surpassed \$350 million, more than halfway to our goal of \$613 million, after only being publicly launched last year. Thanks to the generosity of our community, donations were up last year by over 33%, enabling us to increase scholarship programs and make capital improvements across campus.

You will also learn about many of YU’s exciting innovations and programs, such as the Katz School’s new Security Operations Center, and YU Global, launching

this year, which will prepare the next generation of leaders with cutting-edge certificate programs that open doors to in-demand careers.

These successes are underscored by our five Core Torah Values: Seek Truth (Torat Emet), Discover your Potential (Torat Adam), Live your Values (Torat Chaim), Act with Compassion (Torat Chesed) and Bring Redemption (Torat Tzion). These timeless values drive our institution and ultimately lead our students to live lives of value and impact.

In this edition, I invite you to read about our remarkable students, stellar faculty and devoted alumni who are the heart and soul of Yeshiva University. The value of our world class YU education has never been more important. We look forward to rising even higher and continuing to serve the Jewish community and the broader society, creating a better world for all.

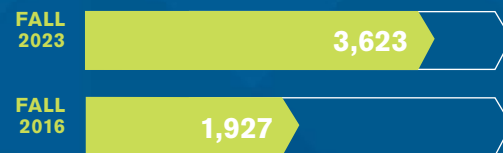
Best Wishes,

Rabbi Dr. Ari Berman

YU FACTS & STATS

GRADUATE ENROLLMENT INCREASED BY

88%



UNDERGRADUATE ENROLLMENT rose significantly in fall 2022 with a

MORE THAN 20%

increase in new students from fall 2021. That trend has risen further in fall 2023, thanks to a 10 percent increase in applications over last year.

ENROLLMENT FOR THE KATZ SCHOOL OF SCIENCE AND HEALTH HAS SKYROCKETED NEARLY

400%

SINCE 2017.

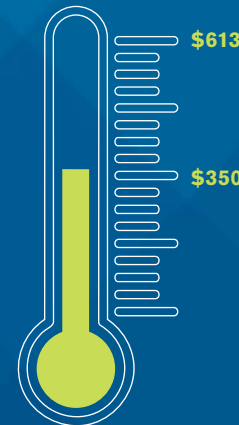


YU FACULTY LAUNCH CUTTING EDGE RESEARCH

New research grants awarded to YU's faculty increased by

177%

between 2021 and 2023.



RISE UP CAMPAIGN

One year since its public launch, YU HAS RAISED OVER \$350 MILLION toward its goal of

\$613 MILLION.

YU IS CURRENTLY EMBARKING ON

MORE THAN 45

construction and infrastructure improvement projects on campus.



THE PARNES CLINIC AT THE FERKAUF GRADUATE SCHOOL OF PSYCHOLOGY is among the four largest training clinics in the United States; it serves over

600 PATIENTS

at any given time and provides over 1,500 appointments per month.



RIETS EDUCATES THE NEXT GENERATION OF RABBIS.

80%

of all major Modern Orthodox congregations are led by RIETS graduates.

THE CARDOZO LAW SCHOOL INNOCENCE PROJECT directly exonerated over

240 WRONGLY CONVICTED PEOPLE

using DNA testing.



YU LIBRARIES CONTAIN A WEALTH OF KNOWLEDGE, WITH

634,000

print books, 271,000 electronic books, 323,000 electronic and physical journals and 202,212 linear feet of shelving—almost 38 miles.



96.9%

OF YU GRADUATING STUDENTS completed up to five internships during their time at YU.



UNDERGRADUATE ACCEPTANCE TO MEDICAL SCHOOL IS DOUBLE THE NATIONAL AVERAGE

91%

of YU undergraduates who applied to medical school earned admission between 2013 and 2023 with 520 applying and 476 accepted.



YU STUDENTS FIND SUCCESS.

97.6%

of YU undergraduates are employed, in grad school or both within six months of graduation.



YESHIVA UNIVERSITY

Marks a Year
of Record
Enrollment





Yeshiva University closed its academic year with record success — not only in a double-digit increase in enrollment that has continued

through 2023, but with an increased competitiveness for admission: current YU applicants present stronger and more dynamic academic achievements than ever, including honors classes and high GPAs and test scores. These increases — in both quantity and quality — are in striking contrast to a nationwide drop in college enrollment of 8% from 2019 to 2022 — the worst plunge in enrollment ever recorded. Indeed, with a nearly 40% increase in applications to YU from 2020 to 2023, students and parents across the globe are clearly recognizing the unique value of a Yeshiva University education, which combines a world-class yeshiva with a world-class university.

“Everything we do at Yeshiva is to empower our students to find their purpose and higher calling, said Rabbi Dr. Ari Berman, President and Rosh Yeshiva of Yeshiva University. “Our growth in enrollment and philanthropy reflects the belief of our supporters and academic

Yeshiva University is the proud home of world-class Roshei Yeshiva and Torah educators who regularly interact with and teach undergrads.

community in our students and their future. We are humbled and honored to serve our community and society by educating the leaders of tomorrow with character and excellence.”

RISING IN WORLD-CLASS TORAH STUDY

Central to YU’s stellar student undergraduate experience is the exposure to great Torah faculty. Yeshiva University is the proud home of world-class Roshei Yeshiva and Torah educators who regularly interact with and teach undergrads. The depth and breadth of YU’s Torah faculty is unrivaled; whatever the student’s level of study or area of Judaic interest, there is a warm and caring teacher ready to provide individual attention. This is important for all students but especially for those returning from intensive Torah study in Israel. YU provides them with unique learning and growth opportunities so they can continue to progress in their religious studies and Jewish lives.

RISING IN EMPLOYER DEMAND AND GRAD SCHOOL ACCEPTANCE

Employers are taking notice. Graduates are placed in world-class companies, including Amazon, Twitter, Goldman Sachs, J.P. Morgan and Google. In fact, nearly 98% of YU students for whom data is available have reached their destination within six months of graduation, including accepting offers for employment and/or admission to grad schools.

Yeshiva University also launched several new pathway programs into great careers in the medical, allied health,



Rav Hershel Schachter, rosh yeshiva at Rabbi Isaac Elchanan Theological Seminary (RIETS) addresses students at YU’s Glueck beit midrash.

social work, psychology and education fields. Students can complete their undergraduate degree and seamlessly continue to YU’s highly ranked graduate schools while building their credits toward both degrees. This includes a new double admission program in which 10 top honors students are accepted straight out of high school to Albert Einstein College of Medicine. This new YU/ Einstein program provides these elite prospects from our communities with the assurance of a premier medical education, including additional research opportunities at Einstein all throughout their undergraduate years.

RISING IN MULTIGENERATIONAL COMMITMENT

A testament to the fact that graduates — parents and grandparents — have found lifelong success both after and as a direct result of their Yeshiva University education is that YU has one of the highest multigenerational admissions of any university in the country. These alumni not only encourage the next generation to attend YU, but also volunteer to help our students throughout their careers, forming an active YU

network of over 70,000. Our alumni work closely with our newly formed Shevet Glaubach Center for Career Strategy and Professional Development, which offers an extensive range of resources from personalized counseling and career planning to workshops, networking events and first-rate internships.

Thanks to the continued success of the Rise Up Campaign — which has raised over \$350 million toward its \$613 million goal — YU has been able to increase its scholarship programs to ensure greater affordability to its growing student body. Both in value and values, YU presents a priceless educational opportunity that is driving more and more students to make YU their home.

RISING IN OPPORTUNITY

Once on campus, undergraduate students take up a rigorous course of study in a wide range of fields, from delving into the Torah and other key texts of Judaism to exploring cutting-edge research in business, entrepreneurship, psychology, pre-medicine, cybersecurity, history and much more.



SPOTLIGHT ON: SY SYMS SCHOOL OF BUSINESS UNDERGRADUATE PROGRAM

With rising enrollment, Sy Syms is seeing tremendous growth in many areas. Students are increasingly building broader and stronger foundations, further enabling them to develop into Torah-grounded professionals who excel in the workplace and in the community. This year, a record 74% of students chose “duals” — double majoring, double minoring and double majoring+minoring — up from 54% five years ago. New programs include Business Communications, focusing on soft skills; an expansion of the Jewish Values curriculum to include Jewish Public Policy; and the YU Israel Summer Internship program.

THE NUMBER OF STUDENTS
THAT EMBARK ON DOUBLE MAJORS, MINORS
OR OTHER ADVANCED COURSE LOADS
HAS INCREASED BY

54%

IN THE PAST FIVE YEARS

For example, Yeshiva University’s Bachelor’s in Computer Science features an innovative curriculum that is tailored for students to step out of the program and walk into top-shelf jobs in the New Economy, and YU degrees in health-related fields are also highly attractive and a good value to YU’s undergraduates.

Additionally, YU offers a growing number of minors, which help guide students toward the academic course of study that is right for them.

RISING IN STUDENT LIFE

Warm and welcoming, YU offers an enriching student life that gives students a close-knit sense of community. Over 150 student-run organizations and clubs provide opportunities to get involved in politics, Holocaust education, journalism, medical ethics, music, the arts and many other extracurricular activities. Holiday events and Shabbat programming bring hundreds of students together in an inspirational community setting of shared values as they enjoy great food, thought-provoking speakers, profound discussions and new friends, while creating memories that will last a lifetime.

THE FLAGSHIP JEWISH UNIVERSITY

Together with world-class academics, vibrant student life and impactful career services, YU is the most effective bridge to students’ future lives of enormous professional and personal success.

“Parents are recognizing that a Jewish education and a Jewish environment are vital as young people forge their identity as adults,” said Geri Mansdorf, Assistant Vice President of Enrollment. “These are formative years, and the environment that a person has in their college years is extraordinarily impactful to who they become as an adult. Also, with growing antisemitism both here and abroad, there is a desire to come closer to the Jewish community, and for their children to be in a safe place.”

A YU education opens doors to success, while helping students ground their study in Core Torah Values and become intellectually curious innovators — deeply rooted in a 3,000-year-old heritage infused with meaning — who are changing the world for the better. The value of a YU education has never been clearer, and a record number of new students are poised to discover what makes YU the flagship Jewish university.

“There is no equivalent to YU,” said Mansdorf. “No other university combines a world-class college education with a world-class yeshiva, complete with a deep support network, vibrant social activities, and rich campus life for our community of shomrei Torah and mitzvot. The world is open to you at YU.” ■

Both in value and values, YU presents a priceless educational opportunity that is driving more and more students to make YU their home.

“There is no equivalent to YU. No other university combines a world-class college education with a world-class yeshiva, complete with a deep support network, vibrant social activities, and rich campus life for our community of shomrei Torah and mitzvot.”

GERI MANSDORF
Assistant Vice President of Enrollment





SHEVET GLAUBACH CENTER
FOR CAREER STRATEGY AND
PROFESSIONAL DEVELOPMENT

YU STUDENTS LEVELLING UP



**Graduates
are Finding
Extraordinary
Success**



Yeshiva University is showing results that put it way ahead of the pack. YU grads have a near perfect record of employment or graduate school

acceptance within six months of graduation, giving it one of the highest success rates for students entering the job market in the nation. This is in comparison to worrying national trends where about 53% of new college graduates across the country are either unemployed or underemployed.

This success is a direct result of vital resources and support provided by YU, most importantly the Shevet Glaubach Center for Career Strategy and Professional Development, which acts as a campus hub of resources, opportunities and hands-on assistance that drives our students' success. YU students benefit from career development and guidance, with staff taking a personal interest in their dreams, hopes and aspirations far beyond

The Shevet Glaubach Center for Career Strategy and Professional Development at Yeshiva University stands as a beacon of support for students as they navigate their career journeys.



YU alumnus Barry Aranoff, audit partner at Shanholt Glassman Klein Kramer & Co. greets a student at the Shevet Glaubach Center's Finance and Accounting Fair.

the boundaries of their undergraduate curriculum. Supported by a network of 70,000 alumni, YU students leave the University ready to embark on lives of great personal and professional success, becoming the leaders of tomorrow who contribute to the betterment of our world.

NETWORKING FOR SUCCESS

In addition to resume reviews, assistance with personal statements, mock interviews and industry-focused recruiting events, the Shevet Glaubach Center offers curated resources and advisors by industry. This enables students to connect with clubs, alumni and faculty, as well as internships and jobs that are specific to the career they wish to pursue. This unique model is called "Connections and Partnerships for Success," or CAPS for short.

Networking plays a pivotal role in our students' success. Our inaugural young alumni mentoring program, "The Thirty," partners new graduating students with alumni under the age of 30 who are working in their respective

fields, forming connections that help new grads on their road to corporate success. Piloted in the spring of 2022, the inaugural cohort paired nine graduating seniors with nine alumni. In 2023, the program had a 122% increase in participation with 20 graduate-alumni pairings, while four of the prior cohort's mentees transitioned to mentors. Moreover, YU-MVP — a mentoring network of over 1,300 alumni across industries — helps prepare students for interviews and provides industry-specific career advice. The number of students actively participating in YU-MVP has risen in one year from 670 to 944.

IMPRESSIVE PLACEMENT RATES

It is no surprise that with the support of successful alumni, graduates' successful placement in either a job or graduate school of their choice increased 2% from the already impressive 95.5% placement rate from the Class of 2021. About one-third of the employment offers originated from internship conversions, with 97% of our graduating students having completed up to five internships during their time at YU.

97.6%

OF ALL YU GRADUATES LAND A JOB OR ATTEND GRADUATE SCHOOL WITHIN SIX MONTHS AFTER GRADUATION

In the Class of 2023, those students pursuing graduate school were most interested in social work, law, nursing/allied health, medicine and consulting (as compared to the class of 2021, where education was the top graduate field of interest, followed by accounting and then finance). Notably, social work was not in the top five one year prior, which may be representative of our students' responsiveness to the nation's mental health crisis following the pandemic.

UNPRECEDENTED OPPORTUNITIES

In academic year 2022–2023, the transformational gift from the Glaubach family created opportunities for students to attend professional conferences, receive stipends for non-paid internships and send students to national competitions to compete against students from other top-tier universities in areas such as finance and technology.

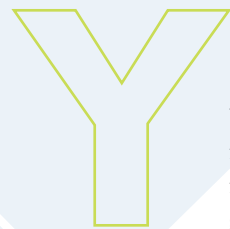
The Shevet Glaubach Center for Career Strategy and Professional Development at Yeshiva University stands as a beacon of support for students as they navigate their career journeys. Through its unique focus on student interests and aptitudes, personalized resources and strong alumni network, the center empowers students to explore diverse career paths and build meaningful connections. With data-driven strategies and a community-oriented approach, the center continues to foster success, impressive placement rates and the freedom to pursue new fields of interest. ■



YU GRADUATE SCHOOLS

Experience
Explosive Growth





U's graduate enrollment surged in fall 2023, increasing by at least 13% from fall 2022, the highest rate of growth on record — driven by a

huge rise in applications year over year. These increases continue a massive upward trend in recent years: YU has seen an 88% rise in graduate enrollment between 2016 and 2023 in contrast to a mere 6% national growth in graduate school enrollment between 2010 and 2020. In fact, between 2021 and 2022, national graduate enrollment actually declined.

With over 25 new cutting-edge graduate school programs ranging from Artificial Intelligence to Biotechnology, Yeshiva University continues to solidify its status as a preeminent academic institution grounded in Core Torah Values, preparing students for rewarding and meaningful careers in today's most sought-after professions.

THE KATZ SCHOOL OF SCIENCE AND HEALTH

Now the third largest graduate school at YU, Katz School enrollment has skyrocketed nearly 400% since 2017, over 200% since 2019 and over 50% since 2022. This phenomenal increase is thanks to YU's commitment to creating programs that meet today's educational landscape in STEM and health, providing students with the skill sets necessary to succeed in the most in-demand careers. New master's degree programs include Artificial Intelligence, Biotechnology Management & Entrepreneurship, Cybersecurity and a fully online M.S. in Speech-Language Pathology. Six of its 11 grad programs prepare students for careers that land in the top 10 of *U.S. News & World Report's* 2022 best jobs.

Recognized for its phenomenal success rate, Katz was ranked No. 2 on *Fortune* magazine's list of the best online master's in cybersecurity programs in 2022. In addition, 95% of its graduates land high-wage jobs within six months of graduation, and half are offered jobs before they graduate at companies including Amazon, Meta, Deloitte, Ernst and Young, Google, IBM and JPMorgan Chase.

WURZWEILER SCHOOL OF SOCIAL WORK

With enrollment increasing over 30% in the past two years and more than 300% since 2017, Wurzweiler is seeing record growth that shows no signs of slowing down.

Respected across the world for its wide-reaching innovations, Wurzweiler, in partnership with Amudim Israel, opened the Mental Health Therapy Center in Jerusalem to fill a critical need for affordable, English-language mental health services. The center is staffed by Wurzweiler graduate students, recent graduates and other professionals who specialize in a variety of modalities and concentrations.

On the home front, Care Café, Wurzweiler's community-based program providing psychoeducational pop-up support 'cafés' throughout the New York metro area, created a variety of initiatives this year based on the needs of the New York City community. These included a mental health awareness walkathon as well as onsite care for Holocaust survivors and conferences on such subjects as aging support services, which drew members of the Washington Heights community as well as healthcare providers.

OVER
240

WRONGLY IMPRISONED PEOPLE
HAVE BEEN EXONERATED THROUGH
THE INNOCENCE PROJECT



Bruce Bryan, right, is pictured with Josh Dubin, Executive Director of The Perlmutter Center for Legal Justice at Cardozo School of Law, following his release. Bryan is the Perlmutter Center's first client and was granted clemency thanks in part to the Center's efforts.

the use of forensic evidence in courts. The Perlmutter Center hosts the Freedom Clinic at Cardozo, working directly with clients on clemency and other cases. Both build on Cardozo's tradition as the birthplace of the Innocence Project, where clinic students have helped in the exoneration of over 240 wrongfully convicted people from prison.

In 2023, the law school and Yeshiva University worked together to provide a safe haven for professor Dr. Dmytro Vovk and his family when their hometown of Kharkiv, located thirty miles from the Russian border, came under attack. This fall, Dr. Vovk will teach Cardozo students about religious freedom and war.

CARDOZO SCHOOL OF LAW

The Benjamin N. Cardozo School of Law continues to attract the highest credentialed students in its history, with a 3.79 average college GPA and LSAT scores of 164. The success is part of a multiyear trend. The graduating class of 2023 saw 91% of students hired into the ranks of top-tier full-time legal jobs as measured by the American Bar Association. In fall 2023, the LL.M master's program in law attracted 70 students from 28 countries, comprising the school's largest LL. M. class ever.

New programs at the law school include the Perlmutter Center for Legal Justice, created with a \$15 million grant, the largest in the law school's history, to train lawyers in

FERKAUF GRADUATE SCHOOL OF PSYCHOLOGY

Ferkauf enrollment has increased by almost 25% in the last three years. Always working to meet the evolving needs of today's job market for the communities it serves, Ferkauf will offer a remodeled master's degree program in Psychology in 2023–24.

In 2022, in partnership with Achieve Behavioral Health, Ferkauf launched a new master's degree program in Mental Health Counseling specifically for the Heredi and Chassidic communities.

And in April 2023, Ferkauf professor Dr. Elizabeth Seng's migraine prevention research on mindfulness was featured on CBS News and more than 200 of its affiliated TV and radio stations across the nation.



RABBI ISAAC ELCHANAN THEOLOGICAL SEMINARY (RIETS)

The Rabbi Isaac Elchanan Theological Seminary (RIETS) is the Western Hemisphere's leading center for Torah learning and for the training of the rabbinate. For over a century, it has provided an unsurpassed educational experience in the classic mold of the great yeshivot.

More than 3,000 of the world's most distinguished Orthodox rabbis, scholars and teachers have been trained there, and 80% of all major Orthodox congregations are led by the school's alumni. On October 29, 2023, the YU community will celebrate Chag HaSemikhah 5784, when 130 newly ordained rabbinic graduates will join the illustrious community of RIETS alumni worldwide.

In an increasingly complex world, RIETS accepts the challenge of preparing its students to face the multifarious issues of today's society and has developed programs to meet the communal and personal needs of our time and place. New among them are its pastoral counseling graduate program, offered jointly with YU's Ferkauf Graduate School of Psychology, a certificate in Jewish Bioethics and a master's degree in Hebrew Literature.

SY SYMS SCHOOL OF BUSINESS

Enrollment continues to rise along with the addition of exciting new programming, new master's degrees and partnerships with other YU schools.

Completing its second year, enrollment in the Syms online MBA program more than doubled from 2021–22 and is expected to grow by a further 50% in the 2023–24 year. In the works is a Real Estate concentration that will leverage the core courses from the Mitzner MS in Real Estate program.

A new Semikha+MBA program with RIETS is also debuting in the 2023–24 academic year, while a new Non-Profit Leadership elective is slated to debut in early 2024 and may grow into a concentration; more high-demand concentrations are on the way.

Also, completing its second year, enrollment in the online MS in Accounting program grew 50%, which included growth in the number of undergraduate Accounting students continuing into the MS program via our BS/MS Pathway. A new taxation track will soon be added to the program.

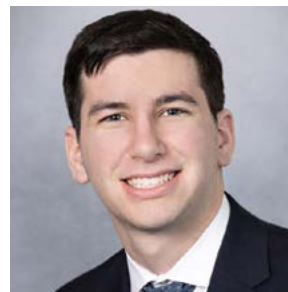
ALBERT EINSTEIN COLLEGE OF MEDICINE

Yeshiva University Honors Programs and the Albert Einstein College of Medicine enthusiastically announce a new partnership that provides a select number of exceptional high school seniors early assurance to an honors undergraduate education and medical school training.

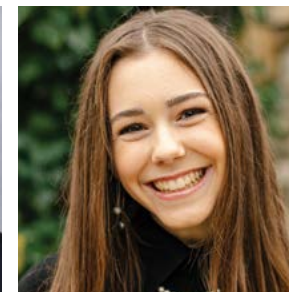
High school senior applicants with a demonstrable interest in medicine who are certain that medicine is the lifetime career they want to pursue are encouraged to apply.

This year's cohort of only 10 students from across the country include Aaron Sisser, Yeshiva University High School for Boys' 2023 valedictorian and Rivka Sullivan, Yeshiva University High School for Girls (Central) 2023 salutatorian.

During their expected time at YU, these exceptional students and their program peers will be encouraged to explore a wide range of Yeshiva liberal arts and sciences



Aaron Sisser



Rivka Sullivan

majors in order to acquire a broad-based education that can be applied to the study of modern medical science.

BERNARD REVEL GRADUATE SCHOOL OF JEWISH STUDIES

Revel continues to see strong growth in enrollment, increasing its student body by 96% since 2016 and developing a range of cutting-edge initiatives. Meeting the demand for rigorous but accessible coursework, Revel has created a program in partnership with the Philos Project, a nonprofit organization that promotes positive Christian engagement with Judaism. The students will learn Hebrew, Jewish thought, and history from a Jewish perspective.

Graduates of the one-year program will earn a master's degree in Jewish Studies from YU and a certificate in Hebraic Studies from the Philos Project.

AZRIELI GRADUATE SCHOOL OF JEWISH EDUCATION & ADMINISTRATION

Attracting Jewish educators and aspiring educators from around the world, Azrieli graduated a special cohort of master's degree students from South Africa in 2022–23, recruited as part of a partnership with various South African Jewish educational organizations.

For the second year in a row, Azrieli received a grant from the Mayberg Foundation for its innovative On The Move professional development program that uses technology to bring participants into innovative classrooms across the country. The program has been so successful, it is currently being adapted as an Azrieli elective course.

Recognizing the critical need for Jewish educators worldwide, Azrieli partnered with RIETS in the development of the Chinuch Incubator – a program designed to identify and guide potential Jewish educators at both the high school and college level. One Chinuch Incubator program, the MaTTEACH fellowship, grew from serving 20 students to engaging over 50 in various models of teaching in day school settings.

THE EMIL A. AND JENNY FISH CENTER FOR HOLOCAUST & GENOCIDE STUDIES: MORE FIRSTS

The Fish Center for Holocaust & Genocide Studies started a new Advanced Certificate in Holocaust Education, a first-of-its kind program uniquely designed for public and private school educators, administrators and librarians in grades 6–12 who seek effective, age-appropriate methods and materials for teaching about the Holocaust.

THE GRADUATE PROGRAM FOR ADVANCED TALMUDIC STUDIES FOR WOMEN (GPATS)

Since 2016, enrollment has doubled in GPATS, providing women with an exceptional level of Torah and Talmudic learning. Building on its success and responding to demand, GPATS has added a third-year track, as well as a new online “Inside the Beit Midrash” series of faculty teaching online courses. In 2022, GPATS also added a fast-growing Scholars-in-Training Shabbaton program, bringing the women of GPATS to share their Torah at 12 communities near and far.

A new incubator fund from Micah Philanthropies will fund three teaching projects of current students, in which they will be running two summer learning programs and a Washington Heights Beit Midrash.

Rooted in the timeless and transcendent principles of the Torah and led by a world-renowned faculty, a graduate education at YU uniquely qualifies students to become experts in their fields and the leaders of the future. ■



FACULTY RESEARCH

Thrives
at YU





Dr. Honggang Wang, an expert in artificial intelligence and its applications to digital health, 5G/6G communications and cybersecurity, has been named founding chair of Computer Science and Engineering at the Katz School.



Yeshiva University fosters a vibrant research culture. At its cornerstone sits a reputation for academic excellence, creativity and ingenuity.

Funding powerhouses like the National Science Foundation (NSF) and the National Institutes of Health (NIH) alongside private organizations like W.M. Keck Foundation and the Simons Foundation have taken notice by generously supporting research spanning the sciences to the humanities.

Jennifer Kinney, Associate Dean of Research, notes that from 2021 to 2023 new research grants awarded to YU's faculty increased by 177%, with new awards now standing at \$4,242,324 in 2023, up from \$1,531,188 in 2021. Galvanizing YU's research efforts, Kinney works closely with YU faculty to obtain the funding they need for their research and scholarship.

"We are proud that with each passing year, the University has witnessed a remarkable upswing in the securing of research grants," said Kinney. "It enables our faculty members to embark on groundbreaking endeavors that push the boundaries of knowledge and advance their respective fields."

Fostering a rich research culture also brings benefits beyond just money. By collaborating with faculty working at the leading edge of their fields, YU students can develop a deep understanding of foundational and advanced subjects that help them prepare for their own successful careers. A case in point is Samuel Akingbade, a Ph.D. candidate at the Katz School of Science and Health, who, with the help of an NSF grant awarded to

Dr. Marian Gidea, Dr. Edward Belbruno and Dr. Pablo Roldan, is exploring how to harvest energy from small amounts of vibration in human and natural activity.

YU's vital research culture also attracts top-tier talent. For example, Dr. Honggang Wang, an expert in artificial intelligence and its applications to digital health, 5G/6G communications and cybersecurity, has been named founding chair of Computer Science and Engineering at the Katz School. His expertise and previous research grants totaling over \$5 million from the NSF, NIH and the U.S. Department of Transportation make him a valuable addition to YU's faculty.

Yeshiva University's commitment to research drives innovation, advances knowledge and promotes robust student engagement, all of which generate the new insights and transformative knowledge needed to improve the present and prepare for the future. "The flourishing of research at Yeshiva University is a testament to the exceptional quality of the faculty, the institution's continuous pursuit of excellence, and its profound impact on the wider world," said Dr. Selma Botman, Provost and Vice President for Academic Affairs.

Here is a look at the different types of research currently being conducted by faculty members, highlighting the University's commitment to innovation and scholarship.

"The flourishing of research at Yeshiva University is a testament to the exceptional quality of the faculty, the institution's continuous pursuit of excellence, and its profound impact on the wider world."

DR. SELMA BOTMAN
Provost and Vice President for Academic Affairs



DR. ELIZABETH SENG, PH.D.

Associate Professor, Ferkauf Graduate School of Psychology; Research Associate Professor, Saul R. Korey Department of Neurology, Albert Einstein College of Medicine; Deputy Director of the Headache Centers of Excellence Research and Evaluation Center, VA Connecticut Healthcare Systems



Migraine, the second leading cause of disability in the world, affects 40 million people in the United States. Dr. Elizabeth Seng's groundbreaking research with Ferkauf doctoral students focuses on understanding the psychosocial factors associated with migraine attacks and migraine-related disability. At the Headache and Adherence Lab at Ferkauf, researchers explore the use of mindfulness-based cognitive-behavioral therapy (MCBT) through digital technologies to provide targeted behavioral and lifestyle strategies for managing the conditions.

In recognition of her work, Dr. Seng received the prestigious Seymour Solomon Lecture Award from the American Headache Society in 2023, a highlighted lecture at the Annual Scientific Meeting that provides an update on a topic of clinical importance to healthcare professionals.

LIVE GRANTS

Dr. Seng has personally received more than \$1 million in research grants and support from the NIH, the American Heart Association and Veterans Affairs. These include:

FEASIBILITY AND ACCEPTABILITY OF TELEPHONE-DELIVERED MBCT FOR MIGRAINE AND DEPRESSION

GRANT AGENCY
National Institutes of Health: National Center for Complementary and Integrative Health

PROJECT PERIOD
6/1/2021–5/30/2025

AMOUNT AWARDED
\$435,810

MIGRAINE AS A RISK FACTOR FOR CARDIOVASCULAR EVENTS IN THE VETERANS HEALTH ADMINISTRATION

GRANT AGENCY
American Heart Association

PROJECT PERIOD
7/1/2023–6/30/2025

AMOUNT AWARDED
\$299,960



DR. ROEE HOLTZER, PH.D.

Professor, Ferkauf Graduate School of Psychology; Professor, Saul R. Korey Department of Neurology, Albert Einstein College of Medicine

Dr. Roe Holtzer, an expert in cognition and motor function of older adults, conducts research on the cognitive and brain predictors of mobility in both aging and diseased populations. "Individuals who walk poorly are at greater risk of developing dementia, disability, frailty and are even at a greater risk of mortality," noted Dr. Holtzer.

Using innovative interdisciplinary technologies, he measures cognitive and brain function during active walking in older adults and patients with HIV and multiple sclerosis. His research reveals how to improve mobility and reduce adverse outcomes, offering possible remedies to a society with a growing aging population.

LIVE GRANTS

Through 2019 to 2022, Dr. Holtzer and his collaborators collectively have received more than \$8 million in research grants from the NIH. In terms of training the next generation of clinical psychologists and neuropsychologists in research, he currently has 53 peer-reviewed publications with students from his Neuropsychology Cognition and Mobility Lab; most of these publications have used data from his previous and current NIH grants.

CENTRAL CONTROL AND NEUROINFLAMMATORY MECHANISMS OF LOCOMOTION IN OLDER ADULTS WITH HIV

GRANT AGENCY
National Institutes of Health: National Institute of Neurological Disorders and Stroke

PROJECT PERIOD
12/21–11/27

AMOUNT AWARDED
\$4,063,044

ASSESSMENT OF COGNITIVE DECLINE USING MULTIMODAL NEUROIMAGING WITH EMBEDDED ARTIFICIAL INTELLIGENCE

GRANT AGENCY
National Institutes of Health: National Institute on Aging

PROJECT PERIOD
9/22–9/26

AMOUNT AWARDED
\$1,171,812

BRAIN PREDICTORS OF MOBILITY AND FALLS IN OLDER ADULTS WITH MULTIPLE SCLEROSIS

GRANT AGENCY
National Institutes of Health: National Institute of Neurological Disorders and Stroke

PROJECT PERIOD
3/19–2/24

AMOUNT AWARDED
\$3,400,889





DR. EMIL PRODAN, PH.D.
 Professor of Physics, Stern College for Women; Director of Mathematics Program, Katz School of Science and Health

Dr. Emil Prodan is an award-winning scientist specializing in the dynamics of complex systems at the intersection of physics and mathematics. His work involves developing mathematical models to analyze the interactions, relationships, patterns and mechanisms between system components in order to predict behavior, understand emergent properties and

optimize system performance. His work has wide-ranging practical applications in such fields as engineering, biology, environmental science and economics.

“In theoretical physics and mathematics,” said Dr. Prodan, “you don’t need a hospital, or a medical school, or a big lab; you just need an idea and the ability to prove it on a piece of paper, and suddenly you can show the world something they have never seen.”

In 2016, Dr. Prodan was the member of a joint Yeshiva University-New Jersey Institute of Technology (NJIT) team that received \$1 million over three years from the W.M. Keck Foundation for a pioneering biophysics research project on “Topological Phonons” – vibrational energy confined to the surface or edge of a material. His most recent grant, funded by the U.S. Army, focuses on practical quantum computing.

By collaborating with faculty working at the leading edge of their fields, YU students can develop a deep understanding of foundational and advanced subjects.



LIVE GRANTS

TOPOLOGICAL APERIODIC MATERIALS AND META-MATERIALS

GRANT AGENCY
 National Science Foundation

PROJECT PERIOD
 2019–2024

AMOUNT AWARDED
 \$378,000

COLLABORATIVE RESEARCH

TOPOLOGICAL DYNAMICS OF HYPERBOLIC AND FRACTAL LATTICES [part of a large collaborative grant with U Colorado Boulder and NJIT]

GRANT AGENCY
 National Science Foundation

PROJECT PERIOD
 2021–2024

AMOUNT AWARDED
 \$277,958

TOPOLOGICAL PHASES IN EXTREME APERIODIC AND CORRELATED REGIMES: A VIEW FROM NONCOMMUTATIVE GEOMETRY

GRANT AGENCY
 Army Research Lab

PROJECT PERIOD
 2023–2026

AMOUNT AWARDED
 \$355,271



DR. MARGARITA VIGODNER PH.D.
 Associate Professor of Biology, Stern College for Women

Dr. Margarita Vigodner, a prominent researcher on male infertility and reproductive health, has secured multiple federal grants to pursue cutting-edge research because, she noted, “there could be hundreds of causes of male infertility, and the more we understand this process, the closer we are to treating it.”

Her involvement of students in the research is a crucial component of these grants: more than 70 undergraduates and 15 honors students have been trained in her laboratory over the past 15 years. Currently, 22 undergraduates and four postdoctoral fellows from her lab are co-authors of studies published in professional journals. Continuously supported by the NIH’s National Institute of Child Health and Development, her research holds promise for future breakthroughs.

Dr. Vigodner’s involvement of students in the research is a crucial component of these grants: more than 70 undergraduates and 15 honors students have been trained in her laboratory over the past 15 years.

LIVE GRANTS

In 2023, Dr. Vigodner was awarded a prestigious three-year grant for \$450,000 from the Eunice Kennedy Shriver National Institute of Child Health and Human Development, a part of the National Institutes of Health (NIH). This is her third NIH grant at YU.



DR. MARGARET SALA, PH.D.

Assistant Professor, Ferkauf Graduate School of Psychology

Eating disorders (EDs) are highly lethal mental disorders, ranking second only to opioid abuse in terms of mortality rates. Over 28.8 million Americans suffer from them, yet only 20% have access to available and affordable treatment. These sobering statistics spur the research of Dr. Margaret Sala, which focuses on using mindfulness to alleviate these potentially fatal disorders.

In March 2023, Dr. Sala, an assistant professor in Ferkauf’s Clinical Psychology Program, secured her first NIH grant, which will provide about \$800,000 in funding over five years. Her project uses digital technology to integrate cognitive behavioral therapy with mindfulness meditation to target binge eating disorder, a common yet rarely discussed ED.

“Being able to access treatment early and easily is the biggest predictor of recovery,” said Dr. Sala. “This pilot research project will be an important first step in helping people with EDs get the care they need.” ■

LIVE GRANTS

DIGITAL MINDFULNESS MEDITATION-ENHANCED COGNITIVE BEHAVIORAL THERAPY (CBT-MM) FOR BINGE EATING

GRANT AGENCY
National Institutes of Health: National Center for Complementary and Integrative Health

PROJECT PERIOD
2023–2026

AMOUNT AWARDED
\$769,151

SPOTLIGHT ON FUTURE GROWTH OPPORTUNITIES: YU GLOBAL

Developing the future leaders of an ever-evolving world, YU Global opens doors to the most high-demand professions. Launching this year, YU Global offers a range of certificates and short courses in fields like cybersecurity and software engineering, as well as artificial intelligence and its application to fields like accounting, real estate and digital marketing. YU Global also offers certificates for those looking to enter the paralegal profession, construction management, digital marketing and sales, and web design. By providing cutting-edge, career-focused training, YU Global unlocks learner potential for anyone looking for a job, a career, a promotion or even a new professional path.

“Each program has been created based on well-researched job-market trends showing that the need for trained labor in these fields is growing,” said Danielle Wozniak, Vice President for Global Initiatives and Business Strategies. “There are high paying jobs available and YU Global offers the skills and coaching necessary for participants to succeed — at any point in a career trajectory.”

Students can earn YU Global’s employment-focused certificates instead of, or in addition to, traditional higher education degrees. Developed and taught by industry-leading experts aligned with YU’s first-class educational standards, each certificate delivers advanced industry knowledge while cultivating essential soft skills such as communication, critical thinking, problem-solving and teamwork.

And as the speed of technological innovation outpaces the knowledge base of traditional education, YU Global fills an essential need. In today’s rapidly evolving world, affordable, quickly acquired, real-world, and readily available training — taught by a cadre of world-class experts — is more imperative and important than ever.

Research shows that the average worker will change careers between five and six times over the course of their



Danielle Wozniak, Vice President for Global Initiatives and Business Strategies

working life. Not five to six jobs, but five to six careers. YU Global is there to help people pivot into a new career or launch their first one.

YU Global also offers hands-on career services and coaching for resume writing, interview skills and job searches. In addition to providing individuals with career-advancing skills, YU Global will be the premier destination for businesses looking for highly qualified, forward-thinking employees with up-to-the-minute knowledge of today’s cutting-edge fields.

“We are ushering in a new paradigm in higher education by expanding Yeshiva University’s role in all communities and thereby changing the model of what higher education is and can be to people,” Dean Wozniak said. “While we encourage anyone who wants a traditional degree to get one, we also understand that not everyone chooses that path. And no matter what your path or life circumstance, YU Global is there to help you find your way to a fulfilling career.”



OUR FIVE CORE TORRAH VALUES



Their Impact on
YU and the Wider
Community



As we train the next generation of educators, rabbis, health workers and value-driven leaders of industry dedicated to uplifting and improving humanity, we are exceptionally proud of the YU community members who continue to make significant contributions in the areas of science, medicine, civil rights, charity, criminal justice and a host of other industries and enterprises. Our Core Torah Values are at the heart of the Yeshiva University mission and vision, informing every action, initiative and program.

TORAT EMET / SEEK TRUTH

At YU, we are always looking for ways to foster knowledge as well as impart the lessons of history and our sacred Jewish values to educate and launch research that uplifts humanity.

Maimonides Comes to the YU Museum

Yeshiva University Museum's exhibition, "The Golden Path: Maimonides Across Eight Centuries," opened in May, showcasing the life and influence of the great Jewish scholar. The exhibition includes an unprecedented array of Maimonides' manuscripts and documents, some written in his own hand and some rarely seen by the public.

Celebrating an Ancient People

In September, "The Samaritans: A Biblical People" opened at the Museum of the Bible in Washington D.C. Created in partnership with the YU Center for Israel



Rabbi Dr. Ari Berman views books signed by Maimonides himself at the exhibition on the great sage at the YU Museum.



In February 2023, YU held the Dor L'Dor Learning Program, which saw approximately 200 students and their fathers and grandfathers take part in morning seder and shiurim, showcasing the positive impact of Torah learning across generations and providing a meaningful experience for YU families.

At YU, we are always looking for ways to foster knowledge as well as impart the lessons of history and our sacred Jewish values to educate and launch research that uplifts humanity.

TORAT CHAIM / LIVE YOUR VALUES

As the world's flagship Jewish university, we don't just talk about values, we live them and instill them in everything we do. YU's entire curriculum is infused with life-guiding values for each student to incorporate into their personal and professional path so they can live lives of meaning and purpose.

YU Hosts IDF Col. Golan Vach

YU's Undergraduate Torah Studies (UTS) hosted IDF Col. Golan Vach, head of Israel's Elite Search and Rescue Unit, for an inspirational Shabbaton attended by more than 100 students. Vach discussed the impact life-changing careers in public service and humanitarian work can have and shared stories of the many rescue missions he has led globally, including responding to the 2021 Surfside condominium collapse in Florida.

Dor L'Dor Yeshiva Learning Program Draws Close to 200 Parents to YU Batei Midrash

Undergraduate Torah Studies (UTS) hosted the Dor L'Dor Yeshiva Learning Program on Presidents' Day in February 2023, which provided parents with the opportunity to join their child's morning seder and shiurim in all four UTS programs. Close to 200 parents and grandparents, from various locations in the US, Canada and Europe, came to YU's uptown campus for a day of learning and inspiration.

Studies, under the direction of Dr. Steven Fine, it is the first exhibition that provides unprecedented access to the life, culture and history of the Samaritans, a 2,000-year-old community with deep connections to the Bible. As part of the opening events, Isaac Herzog, President of Israel, expressed his thanks via video to the event's organizers and to the "many minds and hands that have come together to bring this exhibition to life and the story of this special community."

Exploring the Secrets of Space

In a YU-hosted panel, "Unlocking the Mysteries of Space," experts discussed the revelations and ramifications of recent images captured by NASA's James Webb Space Telescope — the largest space observatory ever built. The panel was introduced by Dr. Selma Botman, provost and vice president of academic affairs, moderated by Dr. Edward Belbruno and saw discussions with Dr. Marian Gidea along with Dr. James Green, former chief scientist at NASA, and Dr. Michael Strauss of Princeton.



YU undergraduates traveled throughout Morocco visiting Jewish heritage sites and giving back to the local community, including making repairs to tombstones in a Jewish cemetery.

Syms Celebrates its 36th Anniversary

Throughout 2023, the Sy Syms School of Business is celebrating its “Double Chai” anniversary with a yearlong celebration highlighting the “Best of Syms” with monthly themed events. Themes included the school’s Jewish Values Curriculum, Entrepreneurship and Innovation, the school’s Honors Program, and Star Students and Alumni. Fall 2023 semester includes Torah U’Business, Finance and Real Estate, Israel Initiatives and the Sy Syms Annual Shabbaton planned for December.

Record-Breaking Crowds at the 2023 Sarachek Basketball Invitational

Set at YU from March 23–27, the 30th annual Red Sarachek Invitational Basketball Tournament welcomed 24 yeshiva high school basketball teams from across the United States and Canada to compete for the top spot in North America’s most prestigious Jewish high school basketball competition. The championship game attracted over 800 spectators to the Max Stern Athletic Center, with an additional 200 fans gathering at an outdoor viewing party featuring a high-tech digital broadcast truck in the heart of the Wilf campus.

TORAT ADAM / DISCOVER YOUR POTENTIAL

Every person is created in God’s image, and at YU, we recognize each individual’s inherent worth and encourage our students to grow and discover their full potential.

YU Students Experience Morocco

As part of YU’s “Global Citizenship 2023,” over 30 participants spent a week in Morocco exploring Jewish heritage sites, befriending Moroccan Jews, praying at the gravesites of great rabbis, repairing tombstones in the Jewish cemetery, building bridges with Muslim university students and more. Accompanying the group was Rabbi Dr. Ari Berman, President, Yeshiva University; Dr. Erica Brown, Vice Provost for Values and Leadership; Rabbi Ari Rockoff, David Mitzner Community Dean for Values and Leadership; and Terri and Andrew Herenstein, founders of the Rabbi Lord Jonathan Sacks-Herenstein Center for Values and Leadership.

YU Opens Advanced Cyber Center

In March, YU’s Katz School of Science and Health opened the Security Operations Center to provide hands-on cybersecurity training to students. The first of its kind in New York City, the center provides advanced simulations so students can gain real-world experience in countering multiple attack vectors, managing a virtual enterprise network and working with commercial grade security tools.



YU’s annual YUNMUN brought together 370 high school delegates for a 3-day event in Stamford, CT.

From Terrorism to Climate Change, Young Diplomats Take on YU Model UN

YU hosted the 33rd annual National Model United Nations (YUNMUN) event, which brought together 370 high school delegates from 42 schools from the U.S., Brazil, Canada and Israel. The three-day competition featured simulated U.N. committee debates and provided an opportunity for students to develop their debating skills while gaining insight into the importance of international diplomacy.

TORAT TZION / BRING REDEMPTION

We find ourselves in an imperfect world, yet striving to heal, uplift and transform our world is what gives our lives meaning and purpose. From supporting Israel and the rights of the marginalized to discovering medical and scientific breakthroughs that promote the greater good, YU’s students, faculty, staff and our entire community are committed to creating a peaceful, just and bountiful future for us all.

YU Makes History in Dubai

YU launched an historic Jewish studies conference at the Crossroads of Civilizations Museum in Dubai in May, which generated significant positive media attention.

Presented in partnership with the Bernard Revel Graduate School, Rabbi Arthur Schneier Program for International Affairs and the Straus Center, the symposium strengthened ties between YU and the United Arab Emirates and fostered dialogue between Jews and Muslims in the Middle East.

Nosotros@YU

In September, YU gathered with its Washington Heights neighbors for an evening of art and Sephardic music at Nosotros@YU, a unique art exhibition highlighting the connection between Jewish and Latino culture and history. Organized by YU’s Rabbi Arthur Schneier Program for International Affairs and curated with the support of the Philos Project, the event drew an impressive group of community leaders including Congressman Adriano Espaillat (NY-13), Manhattan Borough President Mark Levine, New York State Sen. Robert Jackson (D-31) and New York State Assemblymember Manny De Los Santos (D-72).

Torah Tours® Return

After a three-year hiatus, the Aaron and Blanche Schreiber Torah Tours® Program sent more than 100 undergraduates to 24 communities to enliven the Simchat Torah holiday. Participating students spread enthusiasm, Torah knowledge, energy and passion across North America, forming partnerships that will last far beyond the holiday.

**OVER
100**

**UNDERGRADUATES TOOK PART IN
THE AARON AND BLANCHE SCHREIBER
TORAH TOURS® PROGRAM**

TORAT CHESED / ACT WITH COMPASSION

Humanity has a shared responsibility to support each other and help those in need. YU is proud to offer many initiatives, programs and opportunities inside and outside the classroom that inspire everyone in our community to help the less fortunate and, through each act of kindness and compassion, change lives for the better.

Afghan Scholar Finds Refuge at YU

Dr. Mariam Ahmady, the former chair of the counseling psychology department, psychology and educational sciences at Kabul University, fled Afghanistan and found refuge at Yeshiva University. Arriving in New York in early November 2022 after an arduous departure from her home country, Dr. Ahmady was awarded the position of visiting professor at Stern College for Women. Her teaching fellowship at YU has been generously funded by private donors who choose to remain anonymous.

Stomp Out the Stigma

Active Minds and the YU Counseling Center organized the annual Stomp Out the Stigma event in April at Lamport Auditorium. The program aims to destigmatize mental illness and featured three YU undergrads who have bravely overcome mental health challenges. With over 400 attendees, the program remains one of the most inspiring and powerful events on campus, emphasizing compassion and unity.

Addressing Domestic Violence

In recognition of Domestic Violence Awareness Month and as part of its Community Safety series, Care Café, in conjunction with the Long Live Our Butterfly organization, hosted a self-defense workshop at the Drip Sweat Gym in Washington Heights in October. Joining the event was New York State Assemblymember Manny De Los Santos (D-72). Care Café continued its community outreach efforts with a winter coat and clothing drive. Donations were distributed to its local community partners.

YU Opens Therapy Center in Jerusalem

In fall 2022, the Wurzweiler School of Social Work, along with Amudim Israel, opened the Jerusalem Mental Health Therapy Center. Staffed by Wurzweiler graduate students and other professionals specializing in addiction, anxiety and trauma, the Center offers mental health counseling to English speakers, gap-year students, new immigrants, soldiers with PTSD and others adjusting to life in Israel. ■

In the coming year, as YU continues to be guided by the Five Core Torah Values, we look forward to rising even higher, serving the Jewish community and the broader society, and creating a better world for all.



CORE TORAH VALUES INSPIRE A LIFE OF WISDOM, CONTRIBUTION, AND PURPOSE

Elucidating and illuminating YU's Five Core Torah Values on both an individual and communal level, Rabbi Dr. Ari Berman, President of Yeshiva University launched his new book, *The Final Exam: Letters to our Students*, in February.

In the book, Rabbi Berman presents the Core Torah Values that inspire a life of wisdom, contribution and purpose through the powerful medium of personal letters. With penetrating analysis of core texts, the wisdom of his

own teachers and stories of his journey through and to Yeshiva University, Rabbi Berman honors Torah U-Madda as an educational philosophy while expanding it into a worldview that also embraces truth, dignity and compassion. He encourages his readers to integrate these values into a life of faith and religious integrity that sets as its goal a path to redemption.

The book launch took place during the Seforim Sale and included an interview with Rabbi Berman and Dr. Erica Brown, during which he discussed some of the letters, why he wrote the book and future goals he set in writing it. The event ended with Q&As from students who attended the event and a book signing.



STERN COLLEGE FOR WOMEN
NEW GALLERY SPACE AND
DIGITAL ART LAB

BUILDING BETTER

Building A
Better University





Yeshiva University has a longstanding commitment to providing our students, staff and faculty with the latest and most technologically advanced educational facilities. Under the leadership of Randy Apfelbaum, Chief Facilities Officer for the University, the Department of University Operations is currently overseeing more than 45 construction and infrastructure improvement projects on campus. “University Operations is proud to support the University’s growth and continued success by building and enhancing new facilities,” said Apfelbaum. “These upgrades will lead to better services for students, faculty and staff and an amazing campus environment for all.”

WILF CAMPUS

Furst Hall, originally built in the 1960s and which houses most of the classrooms on the campus, will be renovated and renamed the Belz Building. Thanks to generous support of the Belz family, this renovation includes recladding the building with an energy-efficient glass curtain wall and establishing an art gallery to showcase the Belz collection of Judaica and Israeli art.

New York Senators Charles Schumer and Kirsten Gillibrand secured \$1.5 million of federal funding to renovate **Lampert Auditorium** in Zysman Hall. The project will restore the facility’s Moorish and Art Deco design elements to their original grandeur while providing important modernizations including cutting-edge audio-visual technologies.

To accommodate a growing Sephardic student population, YU is relocating the Sephardic Beit Midrash to a larger, more spacious room in Morgenstern Hall.

This will create a more expansive and meaningful experience for all students.

The newly completed **Yeshiva College Digital Art and Music Laboratory** in Belfer Hall, funded by the Margaret and Leo Meyer and Hans M. Hirsch Foundation, has been equipped with state-of-the-art computers, software and electronic pianos to foster collaboration between the music and art departments on multimedia presentations.

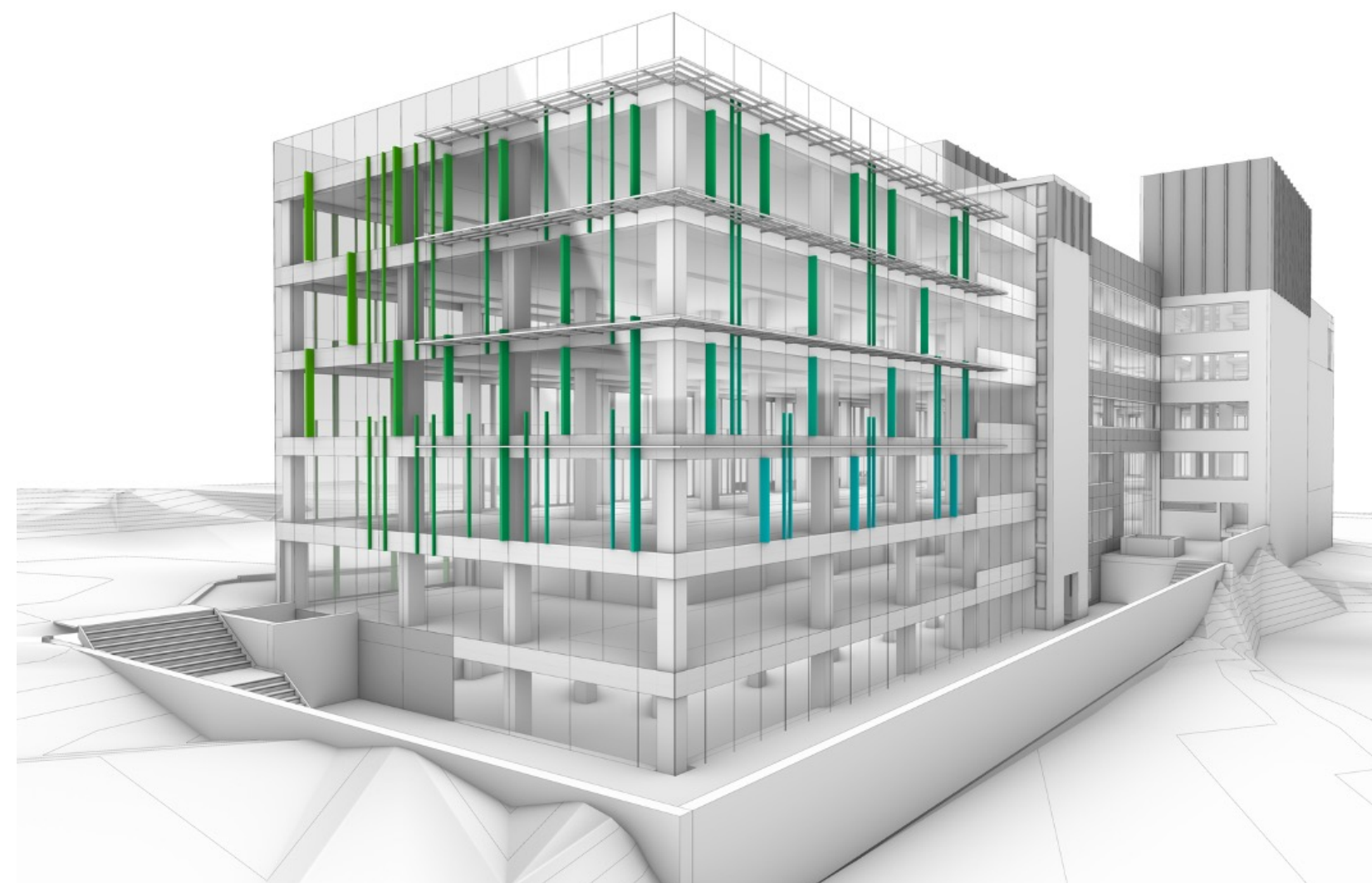
A federal grant of \$1 million as well as a generous gift from the Weissberg family will fund substantial upgrades to **Weissberg Commons** in Belfer Hall, a popular venue for campus and community events. Improvements will include a new conference center, along with new lighting, flooring, wall finishes and a built-in sound and video projection system.

BEREN CAMPUS

To augment the Glaubach family’s multi-million dollar gift establishing the **Shevet Glaubach Center for Career Strategy and Professional Development**, YU is opening a new space at 215 Lexington Avenue that includes interview rooms, offices, a pantry and a lounge with audio-video capabilities for remote interactions.

The Katz School has opened the **Security Operations Center** as part of its cybersecurity master’s degree, noted by *Fortune* magazine as one of the country’s leading online cybersecurity programs. This center provides hands-on training and develops crucial cyber-defense skills for students.

Stern College’s Studio Art program has reconstructed its classroom and gallery spaces, incorporating improved



An artist rendering of the new Belz Building being constructed on the Wilf Campus.



computers and software for the digital art lab and a more spacious room with enhanced gallery lighting for student presentations.

The new **engineering laboratory in Stanton Hall** at Stern College caters to the growing interest in that field. It features large workbench tables, power outlets, 3D printers, rolling tables for student projects and upgraded audio-visual capabilities, thanks to support from the Margaret and Leo Meyer and Hans M. Hirsch Foundation.

The **Lea and Leon Eisenberg Writing Center** at Stern College will be relocated to a new space and upgraded with a student lounge, a conference room and faculty offices to meet the increasing demand for writing support.

YU is enhancing the **Office of Student Life** with new glass-fronted offices and a lounge area for students.

BROOKDALE/CARDOZO CAMPUS

The Cardozo Law School's **Perlmutter Center for Legal Justice**, which focuses on training lawyers in the use of scientific evidence and debunking "junk science," will expand its facilities with four offices and two conference rooms, with support from the Laura and Isaac Perlmutter Foundation.

RESNICK/FERKAUF CAMPUS

The nation's first Non-Verbal Learning Disorder (NVLD) clinic, established by the Ferkauf Graduate School of Psychology in collaboration with The NVLD Project, offers specialized treatment, assessment rooms, a family conference room, teaching and training spaces, a seminar room and a clinic workspace to treat this vastly undertreated condition. The clinic was made possible by Dr. Laura Lemle, a Ferkauf graduate and founder of the NVLD Project.

The Katz School for Science and Health has opened two new programs in fully renovated spaces. One is the physician's assistant program built in renovated space in the Van Etten Building, which includes classrooms, simulated cadaver tables, a simulated hospital and exam rooms, faculty offices and a student lounge. The occupational therapy program occupies two fully renovated floors of the Rousso Building and includes faculty offices, classrooms, a simulated apartment with working kitchen and bathroom, a neuro sensory lab and a modalities lab with training equipment for the students.

SUSTAINABILITY AND INFRASTRUCTURE

Throughout the campuses, YU has launched sustainability initiatives, including new LED lighting which provides better illumination while saving significantly on energy costs, and upgrading to the heating, ventilating and air conditioning (HVAC). Other major projects include elevator replacement in several buildings including Cardozo Law School, Belfer Hall, 245 Lexington and Brookdale Hall, which will provide more reliable and efficient elevator service while consuming less energy.



State-of-the-art exam rooms give real world experience to students in the Katz physician's assistant program.

SECURITY INFRASTRUCTURE

Yeshiva University continues to enhance the security of the campus to ensure the safety of students, faculty and staff. New initiatives, funded by several grants from the New York State Department of Homeland Security, include additional cameras that were added to public areas, hardening of doors and windows and implementation of an upgraded and expanded access control system. ■

Yeshiva University continues its commitment to creating a dynamic and supportive environment for its students through these ongoing projects. With the help of various funding sources, the university is enhancing its educational facilities and realizing its goal of building a better campus for all.



Sustainable and energy saving fixtures illuminate our campus.

YU CELEBRATES RECORD SUCCESS OF RISE UP CAMPAIGN

With over \$100 million raised since its public launch over one year ago, the Campaign has passed its half-way mark and stands at over \$350 million raised toward its goal of \$613 million.

In the first year of its public phase, Rise Up: The Campaign for 613, Yeshiva University's campaign to fund scholarships, facilities and faculty, YU has raised over \$350 million toward its goal of \$613 million. The funding will support investments in YU's four areas of strategic focus — values and leadership, science and tech, entrepreneurship and innovation, and great jobs and impactful careers — strengthening our position as the flagship Jewish university.

Significant scholarship funding has helped YU educate the next generation of leaders, preparing them for lives of personal meaning and great success. Donor generosity in response to Rise Up has resulted in launching many new initiatives, including:

- The new **Belz Building on the Wilf Campus**, which broke ground in 2022.
- **The Graduate Nursing Program** at the Katz School of Science and Health.
- The creation of the **Perlmutter Center for Legal Justice** at Cardozo Law School — a gift from Isaac and Laura Perlmutter — which trains future lawyers in the proper use of forensic evidence in the courtroom and seeks clemency for those serving disproportionate and inequitable sentences.
- **The Lea and Leon Eisenberg Writing Center** at Stern College for Women, dedicated by their children (directors of the Eisenberg Family Foundation), which will greatly enhance the services and programs offered by the current writing center.
- The launch of the **Anita Zucker Program for Jewish Early Childhood Educators**, which will provide scholarships for qualified YU undergraduate students who wish to pursue careers in Jewish early childhood education.
- A gift from the Weissberg family to renovate **Weissberg Commons on the Wilf Campus**.
- Scholarships for the next generation of Jewish educators at the **Azrieli Graduate School of Jewish Education and Administration**.
- The establishment and development of the **Emil A. and Jenny Fish Center for Holocaust and Genocide Studies**, which trains both school and university educators in the field of Holocaust and Genocide Studies and offers graduate programs in the discipline.
- The launch of the **Rabbi Lord Jonathan Sacks Center for Values and Leadership** founded by Terri and Andrew Herenstein, dedicated to the dissemination of core Torah values and the education of tomorrow's leaders through Rabbi Sacks' teachings and life lessons.
- Major expansion of the **Zahava and Moshael Straus Center for Torah and Western Thought**, which educates YU students to be intellectual leaders of tomorrow, well versed in both Torah and Western canon.
- **New engineering labs** on both the Beren and Wilf campuses (Margaret and Leo Meyer and Hans M. Hirsch Foundation).

- **The Selma T. and Jacques H. Mitrani Foundation Computer Science Lab** at Stern College for Women.
- A new **digital arts lab** on the Wilf Campus (Margaret and Leo Meyer and Hans M. Hirsch Foundation).
- The establishment of the **Shevet Glaubach Center for Career Strategy and Professional Development** that is based on best practices in the field of student success.
- The launch of the **Mitzner Master of Science in Real Estate** degree program at Sy Syms School of Business, where students master essential concepts in the real estate industry and access YU's extensive alumni network of real estate professionals.
- **The David Drelich Bloomberg Finance Lab**, featuring the same technology used by the world's leading business and financial professionals, with Bloomberg Terminals — which provide real-time and historical data, market moving news and analytics — serving as a hub for learning.

“Growing the flagship Jewish university to meet the needs and capitalize on the opportunities of our times is the great educational project of our generation. Now is the time to rise up and become a partner in the future.”

RABBI DR. ARI BERMAN
President, Yeshiva University

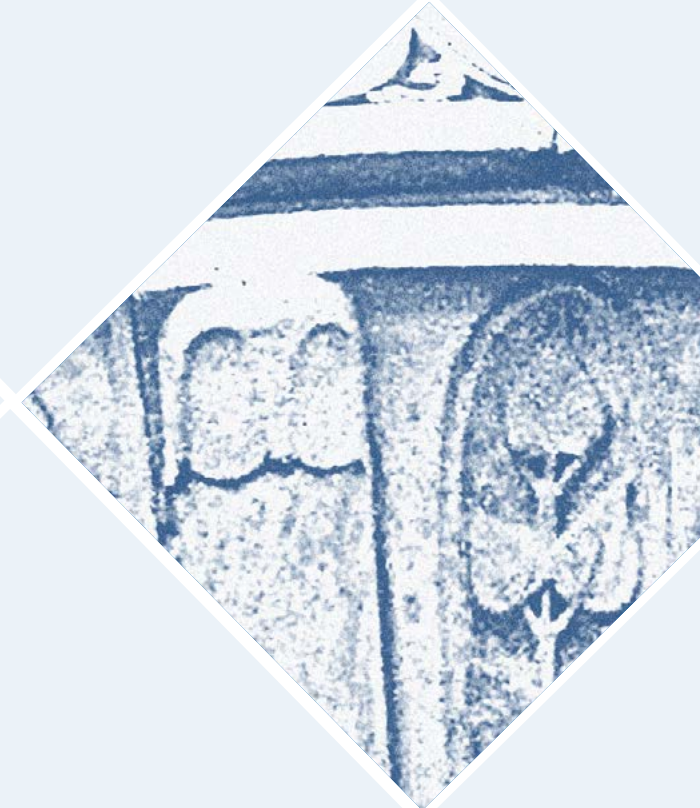
**FOR MORE INFORMATION ON
THE RISE UP CAMPAIGN, GO TO
RISEUP.YU.EDU**

**INVEST IN OUR FUTURE
MAKE AN IMPACT**

RISE UP

- **Adopt a Scholar** — support students with a gift of \$25,000 a year for the duration of the student's education (four years for undergraduates and between three and five years for graduate students).
- **Do a Mitzvah** — take one of the 613 mitzvot by supporting the university with an annual gift of \$200,000 for five years.
- **Ask us about philanthropic opportunities** in areas that are meaningful to you.

**FOR MORE INFORMATION, CONTACT
SUSAN MEYERS, VICE PRESIDENT OF
INSTITUTIONAL ADVANCEMENT, AT
MEYERS@YU.EDU OR 646.592.6885.**





Honor Roll of Donors

PRESIDENT'S SOCIETY



We are deeply thankful for our supporters, alumni and friends, who have made this past year of giving a record success. Last year we saw a 33% increase in cash gifts, and our average over the past three years of total philanthropy is \$85 million, almost triple the number from five years ago.

Through their generous philanthropy, our donors support the most vital priorities of Yeshiva University, such as scholarships, faculty support and research. To show our donors how much we cherish their commitment, we are pleased to list members of Yeshiva University's President's Society, which recognizes donors of this past year to YU who gave \$1,800 or more.

If you would like to learn more about the President's Society or would like to review your listing name, please contact Kurt Deschermeier at kurt.deschermeier@yu.edu or 646.592.4488.

ETZ CHAIM (TREE OF LIFE) \$1,000,000+

Marilyn* and Jack A. Belz and
The Belz Family Foundations
Eisenberg Family Foundation
Debbie and Elliot Gibber and Family
Drs. Miriam and Felix Glaubach
Terri and Andrew Herenstein
Monique and Mordecai* Katz
and Family
The Ira Mitzner and Riva Collins
Families
The Laura and Isaac Perlmutter
Foundation
Estate of Zelman Gordon Rips
Zahava and Moshael Straus
The Jesse S. and Gloria Weissberg
Family
Anita Zucker
Anonymous (x6)

PRESIDENT'S CABINET \$500,000-\$999,999

Miriam and Alan Goldberg
Diana Gordon and Alexander
Tsigutkin
Beth and Ben Heller

Debra and David Magerman
Marnie and David Nagel
Anonymous (x1)

SENIOR LEADERSHIP \$100,000-\$499,999

Renée and Steve Adelsberg
Ann and Rabbi Hyman* Arbesfeld
Dr. Gail and Jack Bendheim
The David Berg Foundation
Estate of Honey Berger
Hadassah and Marvin Bienenfeld
Blavatnik Family Foundation
Marjorie Diener Blenden
Drs. Jane and David Bloomgarden
Polly and Gabriel Bousbib
Jacob Burns Foundation
Lorraine and Dr. Sorrell Chesin
The Cons Family
The David Drelich Irrevocable
Trust - Fred Krause, Ph.D., Stephen B.
Drelich, Esq.
The Zoltan Erenyi Charitable Fund
Estate of Gertrude and Louis Feil
Maria and Joel Finkle Foundation
The First Independent Hebrew
Congregation of Jamaica
Rose and Philip Friedman

The Gewurz Family
Judith and William Greenblatt
Bob and Debbie Hartman
Ronny and Toby Hersh
Rivkie and Lance Hirt
Alissa and Shimmie Horn
Jewish Foundation for Education
of Women
Debbie and Howard Jonas and Family
Denise and George Karasick
Linda and Mark Karasick
Rina and Dr. Henry Kressel
The Legal Clinic Fund at The Miami
Foundation supported by The Abrams
Foundation, Democracy Fund,
Heising-Simons Foundation, and
The Klarman Family Foundation
Leon Levy Foundation
The Meyer Foundation
The Margaret and Leo Meyer and
Hans M. Hirsch Foundation
Micah Philanthropies,
Ann and Jeremy Pava, Trustees
David Moore
Samuel & Claire A. Mozel
Charitable Trust
Harriet and Joshua L. Muss
Drs. Jack *and Gitta Nagel

*Of blessed memory

Tracey Nash-Huntley and David Huntley
 Kathleen and Richard Perkal
 The Vivian G. Prins Foundation, Etta Brandman, Trustee
 The Julis Rabinowitz Family
 Ingeborg and Ira Leon Rennert
 Pamela and George Rohr
 Vivian and Henry Rosenberg
 The Moise Y. Safra Foundation, Inc.
 Estate of Professor Herman P. Salomon
 Dorothy* and David* Schachne and the Schachne Family
 Seeger Weiss LLP
 Marilyn Smilowitz
 The Donald W. Spiro Foundation in memory of Evelyn L. Spiro
 Norman and Johanne Sternthal
 Irving I. Stone Support Foundation
 Sy Syms Foundation
 Laurie M. Tisch Illumination Fund
 Heidi and Jack Varon
 Walder Foundation
 Arianne and Moshe Weinberger
 Anonymous (x8)

DEAN'S LIST
\$25,000–\$99,999

Estate of Abraham Abramowitz
 Joseph Alexander Foundation
 American Endowment Foundation
 Appeal of Conscience Foundation
 The Applebaum Foundation Inc.
 Dr. David Arbesfeld
 Pnina Arbesfeld
 Dr. Aimee and Mr. Jonathan Baron
 Jeff Beja
 Ruth and Seth Berkowitz
 Rabbi Ari and Anita Berman
 Dorothy and Julius Berman
 Estate of Bernard Bernstein
 Beverly and Dr. Richard Berry
 Ellen and Morris Bienenfeld

The Chestnut Foundation
 Gail and Eric Cohen Charitable Fund
 Tali Rosenblatt Cohen and Sender Cohen
 Cybergrants, Inc.
 Daily Giving Incorporation
 Adele and Lawrence Diener
 Mrs. Elaine Marton Diller
 Tabitha and Brian Dror
 Harry and Freida Dym
 Isser and Yona Elishis
 Cindy and Dr. David Feigenblum
 Rachelle and Irving Feigenblum
 Dr. Rina and Mr. Nahum Felman
 The Harry & Jane Fischel Foundation
 Arthur Fisher 2007 Trust
 Judy and Mark Frankel
 The Samuel Freeman Charitable Trust
 Raphael D. and Francine Friedlander Foundation
 Barbara and Michael M. Gamson
 Estate of Irene Geller
 Estelle* and Leonard Glass
 Harold and Carrie Gordon
 Dr. Robyn and Mr. Shukie Grossman
 Jennifer Grubman
 Ralph Herzka & Danny Heumann, Meridian Capital Group
 Barbara and Simcha Hochman
 Janet and Lior Hod
 Robin and Mark Hoenig
 Harry and Rose Jacobs Foundation
 Linda and Michael Jesselson
 Esti and Benyamin Kaminetzky
 Adina and Marcos D.* Katz and Family
 Becky and Avi Katz
 Marisa and Dr. Benjamin Kest
 Kirkland & Ellis LLP
 Drs. Riki and Mordecai Koenigsberg
 Israel Koschitzky Charitable Foundation
 Rachel and Shimon Laufer
 Linda and Murray Laulich
 The Lebensfeld Foundation
 Dr. Joseph Lebovic* and Dr. Wolf Lebovic

Bruce, Fara and Matthew Leff
 Laura Lemle Family Foundation
 Joshua Levian
 Elayne and Howard Levkowitz
 Meir and Dassi Lewis
 Hadassah and The Honorable Joseph Lieberman
 Rebecca and Saul Lubetski
 Phyllis and William Mack
 Estate of Maxwell R. Maybaum
 Grace Mercado
 Jack Miller Center
 Eve and Stephen Milstein
 The New York Community Trust
 Timothy Noonan
 Amanda Nussbaum and Daniel Laifer
 The Oppenheim Family
 Tricia and Jason Pantzer
 Kamal Patel
 Arnold S.* and Madaleine Penner Family Foundation
 Suzanne and Paul* Peyser
 Sherry Pinter
 Estate of Eve Pollack
 Leyla and Daniel Posner
 Steven Prystowsky
 Joyce and Stanley Raskas
 Sharon and David Rauch
 Malki and J. Philip Rosen
 Estate of Rachel Rosenbaum
 David and Yonina Rosenberg and Family
 Ruth Tepler Roth and Dr. Philip Roth
 Sadie and Louis Roth Foundation
 Henry, Bertha & Edward Rothman Foundation
 Hedda Rudoff
 Michelle and Eli Salig
 Jack Saltz
 The Lee and Anne Samson Charitable Foundation
 The Sandel Family
 Jill and Bruce Schanzer
 Heather and Lazer Scheiner

*Of blessed memory

Mindy Schneider and Michael Lesser
 Geraldine Schottenstein
 Jeanie and Jay Schottenstein
 Julie and Shabsi Schreier
 Sephardic Jewish Center of Canarsie Inc.
 Jon Shevell Children's Fund
 Dr. Miriam and Colonel Carl Singer
 Southern Smoke Foundation
 Josh and Jennifer Sussberg
 Mary Isabelle Swartz
 Lillian and Moris Tabacnic
 Dr. Michelle and Bruce Taragin
 Janet and Seth Taube
 Sarala and Danny Turkel
 UJA Federation Of Greater Toronto
 University of Southern California
 Kate and Shai Waisman
 Alan and Elaine Weiler
 The Wein Family
 Gila and David Weinstein
 Lauryn and Dr. Kenneth Weiser
 Morry and Judy Weiss
 Esther and Louis* Wertenteil and Family
 Ilana and Dr. Moshe Wertenteil
 Hennie and Rabbi Shimon Wolf
 Yosef Wosk Family Foundation
 Meredith and Kenny Yager
 Shira and Dr. Daniel Yoshor
 Lori and Alan Zekelman
 The Kenneth and Agnes Zitter Family Foundation
 Dr. Felice Zwas
 Anonymous (x16)

MINYAN CLUB
\$10,000–\$24,999

American Association for Justice
 Robert L. Habush Endowment
 The Louis & Anne Abrons Foundation
 Helen and Emanuel Adler
 Leah and Jonathan Adler
 Rebecca and Ari Adlerstein

Estate of David B. and Rosalind W. Alcott
 American Psychoanalytic Association
 Arcadian Cap Group LLC
 Hudi and Lawrence Askowitz
 Elisheva and Rabbi Elli Ausubel
 Annie and Yale Baron
 David Batalion
 Andrew and Froma Benerofe
 Deborah Beran
 Zelda and Solomon Berger
 Jeffrey and Nancy Bergman
 Iona and Rabbi Dr. Ari Bergmann
 Judy and Norman Bickoff
 Joan N. and Norman Bluestone Foundation
 Lois Blumenfeld
 Sharon and Avram Blumenthal
 James B. Boskey Memorial Foundation
 Stephen and Jill Breitstone
 Adina and Lawrence Burian
 Jennifer and Saul Burian
 Joseph Cattan
 Tzili Charney
 Drs. Esther and Benjamin S. Chouake
 Tzippy and Daniel Cohen
 Elana and Yossi Cohn
 Diane and Howard Cole
 Comcast
 Rosalyn and Rabbi Dr. Abraham Cooper
 The Daniel Family
 Daniel Dominguez
 Sari and Shlomo Drazin
 Shoshana and Joel Dreifus
 TED Supply LLC
 Adena and Ezra Dyckman
 Estate of Samuel Epstein
 Bari and Daniel Erber
 Simone and David Eshaghian
 Hope Fischer Revocable Trust
 Nechama and David Fish
 Adina and Dovid Frankel
 The Frankel Family
 Fund for Jewish Education
 Alan Futerfas and Bettina Schein

Gem Star Foundation Inc.
 Emily and Seth Gerszberg
 Gabrielle Gettenberg and David Goldberg
 Ariel and Baruch Glaubach
 Ira Gluskin and Maxine Granovsky
 Gluskin Charitable Foundation
 Yasha and Nancy Gofman
 Judi and Arthur Goldberg
 Perri and Shraga Goldenhersh
 Prof. Elizabeth Goldman
 Stacey and Amir Goldman
 Shulamith Goldstein
 Jenny and Dr. David L. Gottesman
 The Greenblum Family Foundation
 Henna and David Grunblatt
 Drs. Ariela and Elie Gugenheim
 The Arie & Eva Halpern Family Foundation
 Shoshana and Yehuda Halpert
 Estate of Jack B. Hartog
 Laura and Jonathan Heller
 Greta and Eleazer Hirmes
 Ari Hirt and Karen Blatt Hirt
 The Hofstedter Family
 Elizabeth Holland and Gidon Rothstein
 Dr. Nancy Hollander and Kenneth Sunshine
 Ann Hornblase
 Bruce Hurwitz Family Trust
 Hylands Law Firm
 The Cindi Jacobs and David Samson
 CSL Fellowship Fund at the Miami Foundation
 Doba and Kalman Isaacs
 Sharon Katz-Pearlman
 Marc D. Kemp
 Shira and Yehuda Kessock
 Elli Klapper
 Amy and Stephen Kroll
 Debra and Michael Kupferman
 Rena and Marc Kwestel
 Sara and Ira Landsman
 Sheila and Meyer Last

*Of blessed memory

Latham & Watkins LLP
 Leight Foundation
 Jon Lenzner and Matea Gold
 Tamra and Dr. Benjamin Lesin
 The Kenneth Leventhal Foundation
 Estate of Aaron D. Levine
 The Howard and Irene Levine Family Foundation
 Zev Levine
 Dr. Barry L. and Marcia Wagner Levinson
 Bev and Marc Lewyn
 Lorne and Chaya Lieberman
 Sharon and Harold Lipsky
 Lynn and Joel Mael
 Iris and Shalom Maidenbaum
 Etella and Haim Marcovici
 Judith and Ralph Marcus
 Gladys and Matthew Maryles
 Jed and Simone Melnick
 Meltzer, Lippe, Goldstein & Breitstone, LLP
 Aliza Wein Mermelstein and Michael Mermelstein
 Ruth and Charles Merrill
 Lisa and Leon Meyers
 Dr. Nava and Gideon Miller
 Monique and Robert Mogyoros
 Cheryl and Dr. Ronald Nagel
 Dr. Vivian and Rabbi Moshe S. Neiss
 Sheryl Neuman and Mark Hyman
 New York Foundation For Eldercare
 New York University
 Cody Newton
 Robert Nitabach
 NYS Education Department
 Cali and Moshe Orenbuch
 Juan F. Otero
 Deena and Gilad Ottensoser
 Careena and Drew Parker
 Dr. Joseph A. Penner
 Rivka and Dr. Morris Platt
 The Rabbi Price Foundation
 The Trustees of Princeton University
 Gail Propp
 Jojo Rabinowitz

Jamie and Jonathan Ramsfelder
 Renaissance Charitable Foundation Inc.
 Yael and Kenneth Ripstein
 Robin and David Ritholtz
 Roberta and Joseph Rotberg
 Nomi and Yechiel Rotblat
 Eva and Mordy Rothberg
 Elana and Marc Rothenberg
 Stephen* and Rosalyn Rothman
 Lisa and Howard Rubin
 Zvi and Betty Ryzman
 Wolf Safrin
 Stephen Sage
 Tammi and Bennett Schachter
 Rachel and Menachem Schechter
 Lori Schottenstein
 Judy and Joel M. Schreiber
 Pearl and Carmi Schwartz
 Sarra and Cyrus Schwartz
 Debra and David Segal
 Barbara Seril
 The Shahmoon Family
 Sari and Yaakov Sheinfeld
 Dean Rabbi Dr. Michael D. and Chai Shmidman
 Rebecca and Yehuda Shmidman
 Saritte and Hillel Silvera
 The Slomo and Cindy Silvian Foundation
 Jennifer and Mark Smith
 Honorable Robert Smith
 Dr. Norman Sohn
 Louis Solomon and Beth Goldman
 Dr. Arlene (Lu) Steinberg and Dr. Michael Schulder
 Meryl and Jeremy Strauss
 Stephanie and Adam Summers
 Shira and Yudi Teichman
 Wendy Weiss
 Rochelle and Joseph Weisstuch
 Shlomo Werdiger
 Pami Wexelman
 Susan and Mark Wiesen
 Dr. Marcia Robbins Wilf
 WMM Charitable Foundation

Drs. Abbey and Eric Wolf
 Deena and Harvey Wrubel
 Sarah Fastman Zanger and Dr. Ron Zanger
 Barbara and Dr. David Zukor
 Anonymous (x18)

SCHOLARS CIRCLE
\$5,000–\$9,999

Robert Ades Foundation
 Lita and Mitchel Aeder
 Lea and Ami Aharon
 Miryam and Amos Alter
 Shari and Robert Alter
 American Friends of Leket Israel Incorporation
 Sheila and Ronny Apfel
 Miriam and Rabbi Shlomo Appel
 Sara and Dr. Benjamin Arbesfeld
 Anthony Arnold
 Karen and Michael Aron
 David Aronow Foundation
 Ashendorf Family Foundation
 Ruth Axelrod
 Martin Balsam
 Nazila and Robin Baradaran
 Lori and Shai Barnea
 Lisa and Lowell Baron
 Julia Kagan Baumann
 Tirza and Ariel Bayewitz
 Beverly Beja
 Shifra Drazin Bendheim and Daniel Bendheim
 Beth and Marc Bengualid
 Henri Bengualid
 The Benovitz Family
 Yogev Berdugo
 Deborah and Barry Berg
 Amy and Michael Berger
 Dr. Daniel and Michelle Berman
 Carol and Howard Bienenfeld

*Of blessed memory



Yeshiva University President Dr. Rabbi Ari Berman presenting award the Presidential Medallion for Global Leadership to Dr. Daniel Gold, Head of R&D for the Ministry of Defense of the State of Israel at Commencement 2023 at Madison Square Garden.

Andrea and Bryan Bier
 B-I-L Office Furniture
 Binational Science Foundation
 Janis and Allen Blenden
 Julia and Norman Bobrow
 Danielle and Jason Bokor
 Dr. Morton D. Borg
 Steven Breitman
 Madeline and Dr. Michael Brisman
 Broadcast Music, Inc.
 Bryan Cave Leighton Paisner, LLP
 Julie and Emil Buchman
 Chaya and Dr. Edward Burns
 Ezra Burstein
 Vivian and C. Daniel Chill
 Aviva and Rabbi Chaim Cohen
 Hilda and Jeremy Cohen
 Cole Schotz P.C.
 The Colgan Foundation
 Aileen and Pace Cooper
 Michele and Dr. Benjamin Cooper
 Carole Daman

Doryne and Milton Davis
 Debevoise & Plimpton LLP
 Steven Dorfman
 Karen and Gary Eisenberg
 Yael and Ben Englander
 Judy and Peter Faber
 The Eugene & Estelle Ferkauf Foundation
 Ronna Finer-Berman and Marvin Berman
 Prof. Mark and Chava Finkel
 Lionel* and Ruth Fisch
 Suzi and Dr. George Fischmann
 Jeff and Shari Fishman
 Dr. Joshua Fogel
 Foundation@ Cross River
 Joyce and Michael Frank
 Drs. Elin and Avi Freilich
 Marsha and Tom Friedman
 Roz and Ira Friedman
 Caron and Steven Gelles
 Joan and Howard Gellis

Robin and Marc Gelman
 Nadine Gerson and Robert Zeller
 Rabbi Aaron and Margie Glatt
 Ruben and Sarita Gober
 Shoshana and Boaz Golani
 Joseph and Laura Goldman
 Drs. Chana and Shmuel Goldstein
 Good Health, Inc.
 Jan and Andrew Groveman
 Baila and Abraham Gulkowitz
 Rena Hartman and Ephraim Kutner
 Moise Hendeles
 Michelle and Benjamin Hering
 Herman Forbes Charitable Trust
 Janet Hersh
 Chana and M. Avi Hershberg
 Estate of Jakob Hirschberger
 Shira and Yisroel Hochberg
 Mrs. Norma Holzer

*Of blessed memory

Dr. and Mrs. David Hurwitz
 Linda and Zalman Indig
 International Psychoanalytical Association
 Dr. Esther and President Emeritus Richard M. Joel
 The Rabbi Dr. Leo Jung Memorial Fund
 Elana and Josh Kahane
 Sandy and Rabbi Alan Kalinsky
 David and Judy Katz
 Diane and Gary Katz
 Jed Katz
 Magda and Harold Katz
 Rivi and Avi Katz
 Kilpatrick Townsend & Stockton LLP
 Dr. Sarah and Rabbi E. Samuel Klibanoff
 The Koret Foundation
 Dr. Rama and Mr. Mark Koslowe
 Naomi and Michael Kraut
 Selena and Joshua Kutin
 Debra and Dov Lando
 Larch Legacy LLC
 Avi and Aleeza Lauer
 Marilyn and Eliot Lauer
 Margaret Lenzner
 The Family of Terry F. Lenzner
 Dr. Paul and Esther Lerer
 Barbara and Tuvia* Levkovich
 Jerry G. Levy
 Marc A. Lieberstein
 Lauren and David G. Lunzer
 Rachel and Azriel Mandel
 Mr. and Ms. Mazzotta
 Sue McDermott
 Merchant & Gould P.C.
 Ronni and Jordan Metzger
 Susan and Jeffrey Meyers
 Judy and Monroe Milstein
 Lauren and Mark Mintz
 Jonathan Mizrachi
 Solomon and Sharon Monderer
 Morrison & Foerster LLP
 Georgeanne Gould Moss
 Naomi and Zvi Nachman

Mr. Jacob and Jane Nelson
 New Castle University
 New York Council of Defense Lawyers
 New York Women's Bar Association Foundation, Inc.
 Dara and David Orbach
 Arielle and Adam Parkoff
 Melvin Pekarsky
 Rabbi Menachem Penner
 Dr. Chani Penstein and Mr. Jonathan Hornblass
 Mina and Mayer* Penstein
 Miriam and Allen Pfeiffer
 Janet Pinsky
 Bruce and Linda Potach
 Ilana and David Prager
 Donald Press
 Nomi and Elliot Press
 Batya Raskas
 Paul M. Reinstein
 Tamar and Dr. Avi Retter
 Benjamin A. Reynolds
 Leah and Terry Rifkin
 Yoanna and Rabbi Benjamin Rofeh
 Randall and Chava Rose
 Lisa Rosen, PsyD
 Rabbi Martin and Karen Rosenfeld
 Tamar and Yitzchok Rosenthal
 Mark and Leala Rosner
 Chaya and Alan Rothman
 Tzivia and Yossie Rubin
 Idelle Rudman
 The Saramar Charitable Fund
 Elaine and Rudy* Schott
 Kimberly and Kenneth Schuckman
 Rusie and Chaim Schwartz
 Myra Selesny
 Steven and Dina Selesny
 Scott and Jamie Seligsohn
 Beth and Dr. Joel Selter
 Asher Shafran
 Karen and Eric Shakin
 Allen D. Shensky
 Victoria Shtainer, Esq.
 Dr. Marc and Francine Sicklick

Helen and Gerald Silver
 Karen Greene Silver and Scott Silver
 Miriam and Tuvia Silverstein
 Dov Simons
 The Simons Foundation
 The Sino-Judaic Institute
 Jessica and Steven Spector
 Phyllis and Mark Speiser
 Steven and Lorraine Spira
 The Steele Foundation
 David Stoll MD, Inc.
 Roberta and Irving Strauchler
 The Margot Sundheimer Foundation
 Aviva and Marvin Sussman
 Emily Tisch Sussman
 Janice Hopkins Tanne and Sol* Tanne
 Shira and Elliot Teichman
 Carrie and Dr. Jerrold Teitcher
 Chana Tokayer
 Nathaniel Y. Tracer
 Carol E. Trompeter
 Steve Tugentman
 Union of Orthodox Jewish Congregations of America
 Aviva and Avi Vogel
 Rabbi Myron and Gila Wakschlag
 Paula and Dr. Leslie Walter
 Helen and Jacob Weichholz
 Estate of Jonas F. Weiser
 Meredith Weiss, MD
 April and Elliot Wiener
 The Wollowick Family Foundation
 Shira and Andrew Wurzbarger
 Judy and Fred Zwas
 Anonymous (x16)

**CHAI (LIFE) SUPPORTER
 \$1,800–\$4,999**

Ace Gold, Inc.
 Kimberly and Kenny Ackerman
 John Addeo

*Of blessed memory

Rabbi Alon and Mrs. Riva Amar
 The American Scandinavian Foundation
 Sara and Gregory Angrist
 Rabbi Jared and Sarit Anstandig
 Evan Anziska
 Martin W. Aron
 Jo-Ann and Mitchel Ashkanazy
 Erin and Joel Austin
 Ami and Bracha Avraham
 Rachel and Rabbi Shalom Axelrod
 Mitchell Balk
 Michelle and Mark Barak
 Lauri and Lewis Barbanel
 Marilyn Barber
 Deveaux Barron and Andrew Berkowitz
 Carolyn and Steven Baruch
 Dr. Norma Baumel and Rabbi Howard* Joseph
 Dr. Ashrei Bayewitz and Dr. Reena Gottesman
 Moshe Bellows
 Deborah Berger
 Dr. Michael and Jeri Bergman
 Alex Berman
 Andrew and Ariel Berman
 Vivian and Stanley Bernstein
 Dena and Joel Bess
 Rabbi Richard and Lois Bieler
 Jeffrey Bier
 Andrew and Esther Bierbryer
 Gail Billig
 Rabbi Jonathan Bindiger and Nahva Hollander
 The Bitton Family
 Yehudis and Levi Blachman
 Devorah and Dr. Melvyn Bleiberg
 Julia Blinder and Leonard Rubin
 Ali and Daniel Bloom
 Alan and Janice Blumenthal
 David Bodner
 Brittney Borruso
 Dr. Selma Botman
 Elaine and Fred Brasch
 Shua Brick

Michael Broida
 Neil Bromberg
 Gene Brotsky
 Michael J. Brown
 Sammy Bruh
 Alberto Btresh
 Dr. Michael Buckstein
 Eddy Cettina
 Sheldon Chanales
 Charlotte and Dr. David Chasan
 Ellen R. Cherrick
 Joanna Cohen
 Yael Cohen
 Congregation Ahavas Achim
 Congregation Bais Yosef Anshe Chesed
 Congregation Bnai Yeshurun
 Dr. Rochelle Cooper-Schneider and Dr. Abraham Schneider
 Adrienne Cooper-Wolfe and Dr. Michael Wolfe
 Laura and Douglas Cox
 Dr. Dana and Rabbi Joshua Dachman-Soled
 Peggy and Philip Danishefsky
 Malky and Rabbi Reuven Danzger
 Simcha and Risa Dauer
 Naomi and Aryeh Davis
 Gregory Michael Dell
 Estate of Vera D. Denty
 Eitan Drazin
 Jill Drossman, PsyD
 Judy and Rabbi Mordy Dubin
 Rabbi Ira and Chevi Ebbin
 Rahel and Rabbi Dr. Isaac Ehrenberg
 Rabbi Dr. Richard Ehrlich
 Linda and Barry Eichler
 Rachel Einhorn and Akiva Greenfield
 The Eliot at Troy
 Yali Elkin
 Chana Elman and Samuel Levy
 Dr. Martin and Gail Elsan
 Erlbaum Family Foundation
 Leah and Rabbi Reuven Escott
 Kim and Steven Ettinger
 Ronit Farber

Matthew Fassler
 Esther and Walter Feinblum
 Roslyn and Toby Feinerman
 Carole and Arnold* Feldman
 Dr. Jeffrey and Mrs. Susan Feldman
 Judy and Joshua Feldman
 Rabbi Adam Felsenthal
 Leora and Jay Fenster
 Andrew H. Feuer
 Adam and Karen Feuerstein
 Asher Finkelstein
 Ellen Finkelstein
 Emil A. and Jenny* Fish
 Daniel Forman and Jessica Chen
 Linda and Daniel Forman
 Erica and Yosef Fox
 Ronnie and Dr. Melvin Fox
 Dean and JoAbby Frankel
 Marc Frankel
 Rabbi Yair and Dr. Miriam Frankel
 Laurence Freilich
 Dana and Jeremy Frenkel
 Davida and Shimon Fried
 Ruth and Sholom Fried
 Sima Fried
 The Fried Family
 Fried, Frank, Harris, Shriver & Jacobson LLP
 Alan Friedman
 Paula and Dr. Howard Friedman
 Stephen and Nechama Friedman
 The Friedman Family
 Francesco and Marina Galesi
 Benjamin and Hadassa Gelbtuch
 Lauren and Michael Gewirtz
 Amy and Daniel Gibber
 Faith Ginsburg
 Shulamit and David Ginsburg
 Vivian and Mauricio Gluck
 Rahel and Dr. Scott Goldberg
 Laura and Jeremy Goldfeder
 Barry and Judy Goldgrab
 Robin and Shelby Goldgrab

*Of blessed memory

Barbara and Shmuel Goldin
 Lisa Goldman and Joshua Reiss
 Rachel and Israel Goldman
 Elyssa and Ezra Goldschmiedt
 Susan and David Goldsmith
 Elisheva and Dr. Harris Goldstein
 Elisheva and Simcha Goldstein
 Stanley M. Goldstein Memorial Fund II
 Aviva and Daniel Gordon
 Rabbi Shalom Gottesman
 Miri and Menachem Gottlieb
 The Gould-Shenfel Family Foundation
 Josh Graham
 Halana and Alan Greenberg
 Shira and David Greenberg
 Aharon Greenblum
 Aviva and Philip Greenland
 Rabbi Micah and Mrs. Rivkie Greenland
 Miriam and Dr. Alan Greenspan
 Louis D. Greenstein
 Cecile and Dr. Ed Gromis
 Dr. Ari and Alison Gross
 Miriam Gross
 Sheri and Dr. Fred Grunseid
 Brian Gurtman
 The Gutenberg Family
 Benjamin Halberstam
 Rabbi BZ Halberstam
 Lynn and Martin Halbfinger
 Dina and Natan Hamerman
 Abraham and Bessie Hann Charitable Foundation Inc.
 Amy and Joseph Harberg
 Esther Heimer
 Robert Heizler
 Sandra Hendeles-Goldman and Barry Goldman
 Rabbi Avi and Estee Hirt
 Virginia Bayer Hirt and Rabbi Robert Hirt
 Rabbi Jacob T. Hoenig
 Keith and Sally Hoffman
 The Hofstedter Family
 Ann and Dr. Barry Holzer

Alan Horowitz
 Benjamin Horowitz
 Steven J. Horowitz
 Lori and Dr. Shalom Huberfeld
 Sherry Wilzig Izak
 Dr. Jessica and David Jacob
 Brenda and Danial Jacobson
 Jack Jaffe
 Isadore and Yetta Jashowitz Charitable Foundation
 Linda and James Jashowitz
 JSTOR (Ithaka Harbors, Inc.)
 Deborah and David Kahn
 Milton and Sylvia Kain
 Rochelle and Richard Kale
 Terri and Richard Kalker
 Ruth and Jerome Kameron
 Ninette and Steven Kanarek
 The Estate of Fay Kaplan
 Dr. Judith Kaplan-Weinger and Larry Weinger
 The Kapustin Family
 Estate of Hannah Karbal
 Rabbi Zev Karpel
 Katten Muchin Rosenman LLP
 Joan Sadinoff Katz and Henry Katz
 Dr. Michelle Katz
 Michelle Katz and Eli Spiro
 Pesh and Rabbi Simcha Katz
 Ayelet and Shlomo Katz
 Chaya and Dr. Marc Katzman
 Shoshana and David Kaufman
 Susan and Izzy Kaufman
 Denise and Alexander Kaye
 Michael Kaye
 The Keehn Family
 Rabbi Jay Kelman
 Isaac Khafif
 Roberta and David Kimmel
 Dena and Moshe Kinderlehrer
 Sandy and Ed Klar
 Shari and Dr. Philip Klein
 Simon Klein
 Aaron Kleinman
 Jo and Paul Koenigsberg

Melanie and Yehuda Konig
 Tamar and Dr. Ira Koppel
 Rabbi Barry Kornblau
 Mordechai Kornbluth
 Yosef Kornbluth
 Devon and Yoni Kranzler
 Jo and Sarah Kranzler
 Marcia and David Kreinberg
 Mirko Kunstek
 Dr. Michael Kupferschmid
 Rebecca and Jeremy Kurz
 John LaBarre
 Hillel Laks
 Vejay Lalla
 Cheryl and Lee Lasher
 Adam and Dania Lauer
 Simcha Lauer
 The Law & Humanities Institute
 Adam Lerer
 Lisa Lerer-Zahn and Uri Lazar
 Melanie Leslie
 Anne Claire Lester Foundation, Inc.
 Rabbi Dr. Yosie and Dr. Rachel Levine
 Fran and Leon Levy
 Adina Lewis and Lawrence I. Garbuz
 Eli Liberman
 Atara and David Libman
 Elaine and Scott Liebman
 Rena and Marc Liebman
 Hindy and Daniel Lifshitz
 Miriam and Ezra Lightman
 Lori and Dr. Elliot Linzer
 Lester Lipschutz
 The Litwack Family
 Richard and Julie Lobel
 Audrey and Rabbi Haskel Lookstein
 Lowenstein Sandler LLP
 Dina Lumerman
 Rachel and David Lyons
 The Magence Family
 Alissa Makower
 Bryna and David Malitzky

*Of blessed memory

Rachel and Marvin Mandelbaum
 Henry Manoucheri
 Ellen and Sy Marcus
 Mark and Niva Marmer
 Alan Masarek
 Lawrence May
 Yair and Adeena Mayerfeld
 The Mayor Family Charitable Fund
 Rabbi Gary and Beatrice Menchel
 Dr. Arthur W. Menken
 Francine and Bernard Mermelstein
 Merrill Lynch, Pierce, Fenner & Smith Inc.
 Natalia Meta
 Rabbi David Miller
 Howard P. Milstein
 Shami and Elana Minkove
 Steven and Gila Miodownik
 Charles Mirotznik
 Adina and Norman Misher
 Rabbi Eddie and Sandy Mittelman
 Jordana and Rabbi Jonathan Morgenstern
 Moses & Singer LLP
 Cindy Moskowitz
 Shoshana and Elliot Moskowitz
 Stephanie Mudick
 Adina and Rabbi Jeffrey Muehlgay
 Ruhama and Rabbi Elazar Muskin
 Daniel and Annie Nagel
 Joshua Nagel
 Iain Nasatir
 Morris and Belkis Nasser
 Jenny Nassimi and Dr. David Nassimi
 National Indigenous Women's Resource Center
 Jonathan and Mindy Neiss
 Barbara and Craig Neuman
 Nataly and Stephen* Neuwirth
 Rachel and Adam Neuman
 Sarah and Tzvika Nissel
 Debbie and Robert Nossbaum
 Gail and Terry Novetsky
 Dov Ocken
 The Ohayon Family
 Robert Oppenheimer

Louis and Rachel Ordentlich
 Mindy and Henry Orlinsky
 Aaron and Ahuva Orlofsky
 Jennifer and David Ottensoser
 Dr. Stuart and Dr. Betty Ozar
 Jaclyn and Gonen Paradis
 Drs. Anne and Herbert Pasternak
 Paul, Weiss, Rifkind, Wharton & Garrison
 Shelley and Adam Penstein
 Glenn and Debby Pfeiffer
 Evan Pieri
 Nechama and Rabbi Tuly Polak
 Rabbi Dale Polakoff
 Yael and David Polinsky
 Judi and Stuart Poloner
 Yale Port
 Linda Farber Post and Dr. Kalmon Post
 Rabbi Daniel and Lea Price
 Nechama and Jonathan Price
 Adeena and Yaakov Pultman
 Laura A. Rabb
 Larry Rabinovich
 Rachel and Nathan Rabinovitch
 Dr. Stacey and Rabbi Moshe Radinsky
 Kristen Ramos and Jon English
 Daphna and Daniel Raskas
 Karen and Michael Raskas
 Andrea S. Rattner
 Andrew Redd
 Carol and Rabbi Hyman Reichel
 Elisheva and Ariel Reiner
 Esther and David Renzer
 Yitz and Rachel Richmond
 Keli Rifkin and Judah Rifkin
 Rivkin Radler LLP
 Deborah and Ari Rockoff
 Yona Rom
 David Rosen
 Joshua Rosen
 Chani and Alfred Rosenbaum
 Elanna and Gary Rosenbaum
 Gila and Natan Rosenbaum
 Mark J. Rosenbaum

Elizabeth and Edmundo Rosenberg
 Michael Rosenberg
 Rabbi Jonathan and Tzipporah Rosenblatt
 Rosenblatt Family Foundation, Inc.
 Elana and Benjamin Rosenbluth
 Jacob and Ariella Rosenfeld
 Ali and Ben Rosenthal
 Esther S. Rothbaum
 Marcy Rubin
 Ms. Bracha Rutner and Mr. Joshua Muskat
 Heather Rutner and Michael Plotsker
 Samuel J. & Jean Sable Family Foundation
 Roya and Michael Samuels
 Dr. Allen Sapadin
 Helen and Moshe Sassover
 Ari Satz
 Genie and Stephen Savitsky
 Esther and Ivan Schaeffer
 Michelle and Robert Schanzer
 Harvey and Devorah Schatz
 Rachel and Menachem Schechter
 Dr. Allen Schick
 Larry P. Schiffman
 Tobi and Alan Schilowitz
 Esther M. Schnitzer
 Debbie and Michael Schreiber
 Renee and Elliot Schreiber
 Zachary Schreiber
 Elana and Rabbi Ashie Schreier
 Rena and Elliot Schrier
 Schulte Roth & Zabel LLP
 Rabbi David and Bena Schwartz
 Suzy and Will Schwartz
 Rabbi Ronald and Judy Schwarzberg
 Ari and Atara Segal
 Eleanor and Barry Segal
 Leah and Shmuel Segal
 Michael Segal
 Judy Seiff
 Eric Senderowicz

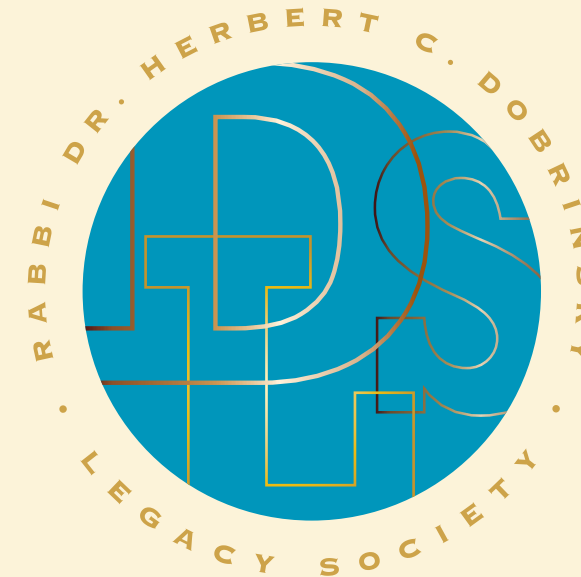
*Of blessed memory

Malka and Joel Shafran
 Jenny and Melvin Shay
 Wendy and Steven Shenfeld
 Rabbi Avraham Shmidman
 Estee Shor
 Kenneth and Bonnie Sicklick
 Drs. Rachel Katz Sidlow and Robert Sidlow
 Estate of Rose Siegel
 Samuel Sigal
 Elana and Jonathan Silber
 Leslie and Jeff Silber
 Dov Silberberg
 Bonnie and George Silfen
 The Simon Family
 Eliza and Moshe Skoczylas
 Aviya Slutzky-Golombeck and Arel Golombeck
 Michelle Small-Roth and Aharon Roth
 Devora and Morris Smith
 Miriam and Dovid Solomon
 Chaya S. Soloveichik
 Ethan and Cheryl Spiegler
 Aurora and Sander Srulowitz
 Richard Stareshesky
 Evelyn and Averim Stavsky
 Orly and Alan Steinberg
 Patti and Michael Steinmetz
 Dina and Marc Sterman
 Doron Stern
 Abby and Aaron Stiefel
 Blimie and Joel Strauss
 Randi Strumlauf
 Mindy Garoon Suchinsky
 S. Donald Sussman
 Marilyn Rabhan Swedarsky and Robert Swedarsky
 Nehama and Lawrence Teitelman
 Suzanne and Dr. Harold Tepler
 Mr. Carl and Dr. Heidi Tessler
 Rachel and Jonathan Tiger
 Rabbi Perry and Miriam Tirschwell
 Rabbi Kalman and Dr. Jordana Topp
 Daniel Treisman
 Ronni and Shlomo Troodler
 Naomi and Louis Tuchman

Rachel and Hillel Tuchman
 Sharon and Gerald Unger
 Edward Vakhovsky
 Larisa M. Vaysman
 Venable LLP
 Dena Verhoff
 Miriam Vogel
 Samuel Wachsmann
 Max and Audrey Wagner
 Tammy and Stephen Wagner
 Ronan Yoel Weinberg Waks
 Alyson and Ari Walfish
 Ross and Jessica Wasserman
 The Wasserman and Hyman Family
 Grace Weil
 Yael and Rabbi Steven Weil
 Fred M. Weiler
 Mitchell Wein
 Meryl and Dr. Alexander Weingarten
 Sharon and Rabbi Jay Weinstein
 Rabbi Yosef and Rebecca Weinstock
 Prof. Richard H. Weisberg
 Greg and Carissa Weiss
 Ken Weiss
 Jeffrey Wilder
 Noel L.C. Williams
 Dr. Michelle Green Willner and Dr. Alan Willner
 Douglas R. Wolf

Dr. Danielle Wozniak and Dr. Jeffrey Bendremer
 Danny and Alicia Yacoby
 Young Israel Charity Fund
 Young Israel of Lawrence-Cedarhurst
 Young Israel of Woodmere
 Vladislav I. Yusupov
 Rabbi Ari Zahtz
 Bella and Rabbi Dr. Joel Zdanowitz
 Leon Zekaria
 Beth and Ariel Zell
 Hadara and Leon Zemel
 Neiv Ziarno and Limor Ziarno
 Galina and Amichai Ziegler
 Efrat and Dr. Uri Zisblatt
 Hyam L. Zuckerberg
 Miriam and Jeffrey Zuckerman
 Anonymous (x29)

*Of blessed memory



THE RABBI DR. HERBERT C. DOBRINSKY LEGACY SOCIETY

The Rabbi Dr. Herbert C. Dobrinsky Legacy Society, which recognizes and honors the loyal donors who have made us aware that they have included Yeshiva University in their estate plans, was established in 2021. This list is in formation. If your name belongs on it, please contact us at PlannedGiving@yu.edu or 646.592.6864.

Julia Kagan Baumann
 Beverly Beja
 Marilyn* and Jack Belz
 Anita and Hal* Beretz
 Paula Whitney Best
 Marjorie Diener Blenden
 Lotte* and Ludwig* Bravmann
 Joanna Cohen
 Lynn and Richard Feinson
 Rabbi Mordecai Halevi Genn, Ph.D.
 Gewurz Family
 Drs. Felix and Miriam Glaubach
 Jenny and Dr. David L. Gottesman

Judith and William Greenblatt
 Eileen S. Greene
 Aviva and Philip Greenland
 Rabbi Dr. Joseph Hirsch
 Sandy and Rabbi Alan Kalinsky
 Eleanor and Steven Katz
 Jed W. Katz
 Rona and Ira Kellman
 Howard S. Levine
 Alexandra Margolis and Bernard Buda
 Charles M. Mirotznik
 Vivien Naim
 David Oden
 Dr. Joseph A. Penner

Dr. Lewis J. Rubin
 Albert Sayegh
 Judith and Rabbi Ronald Schwarzbarg
 Baruch and Ora Sheinson
 Roberta and Irving Strauchler
 Dr. Myra L. Weiner
 Morry and Judy Weiss
 Anonymous (x12)

*Of blessed memory



BENEFACTORS

Yeshiva University Benefactors, donors with lifetime cumulative gifts over \$1 million, enable the University to pursue larger initiatives and respond promptly to new opportunities. Many Benefactors also serve in leadership roles at Yeshiva University. With the utmost gratitude, we thank them for the multifaceted role they play in ensuring our University's success.

S. Daniel Abraham
 Renée and Steve Adelsberg
 Dr. Joseph* and Rachel* Ades
 Estate of Irma Adler
 Dr. André Aisenstadt*
 Chief Rabbi Dr. Isaac Abraham*
 Alcalay and Jelena (Rachel)* Alcalay
 Estate of Naumi Alcalay
 Joseph Alexander Foundation
 Alpern Family Foundation, Inc.
 Bernard E.*, Jacob J.* , and
 Lloyd J.* Alpern
 Barbara and Philip Altheim
 Linda and Earle Altman
 Nathan S. Ancell*
 Estate of Ruth Anixter
 Mrs. Moses L. Annenberg*
 The Hon. Walter H. Annenberg*
 Leila* and Joseph* Applebaum
 Estate of Nathan Appleman
 Rabbi Hyman* and Ann Arbesfeld
 Ambassador Roland* and Dawn Arnall
 The Atlantic Philanthropies
 Atran Foundation
 Joan* and Lester* Avnet
 David J. Azrieli*
 Frederick* and Eleanore* Backer
 Jeannette P. Barron Charitable Trust
 Charles C. Bassine*
 Florence* and Theodore* Baumritter
 Dr. Jayne G. and Harvey Beker
 Diane* and Arthur B.* Belfer
 Renée E. and Robert A. Belfer
 Marilyn* and Jack A. Belz

Sarah* and Philip* Belz
 Els* and Charles* Bendheim
 Dr. Gail and Jack Bendheim
 Estate of Peter Benefeld
 Estate of William Benenson
 Dorothy* and Carl* Bennett
 Harry H. Beren*
 Israel Henry Beren*
 Israel Henry Beren Charitable Trust
 Robert M. Beren*
 David Berg Foundation
 Margaret and Sol* Berger
 Max Berger Trust
 Dorothy and Julius Berman
 Dassie and Rabbi Marvin Bienenfeld
 Gertrude* and Morris* Bienenfeld
 Halina* and Samson* Bitensky
 Marjorie Diener Blenden
 Harold* and Muriel* Block
 Tekla* and Simon A.* Bond-Cyvia and
 Moshe Bezalel Baumblat
 Lotte* and Ludwig* Bravmann
 The Breast Cancer Research
 Foundation, Inc.
 Carl S.* Bresnick and Don A.S.
 Breswick
 The Edna S. Brodie Trust
 The Brookdale Foundation
 Joseph* and Gertrud* Buchler
 Jacob Burns Foundation
 Sylvia* and Irwin S.* Chanin
 Leon H.* and Tzili Charney
 Dr. Lillian Chutick*
 Dr. Rebecca Chutick*
 Rose* and Wilfred P.* Cohen

Tali Rosenblatt Cohen and
 Sender Z. Cohen
 Herman Dana Trust
 Dr. Philip David
 J. Morton and Rosalind* Davis
 Leonard and Sophie Davis Foundation
 Estate of Rebecca Davis
 Mirrel Davis*
 Herbert S.* and Naomi* Denenberg
 Leonard* and Bea* Diener
 Dr. Gerald and Myra Dorros
 Erica A. Drake
 Lea* and Leon* Eisenberg
 Eisenberg Family Foundation
 Warren and Mitzi Eisenberg
 Todd M. Eisenbud
 El-An Foundation (Schottenstein,
 Deshe, and Diamond Families)
 The Ellison Medical Foundation
 Col. and Mrs. Jehiel R.* Elyachar
 Estate of Joseph Emanuel for the
 Benzion, Clara, Jacob, Sarah and
 Joseph Emanuel Fund
 Israel Englander
 Kurt* and Margaret* Enoch
 Estate of Ernst L. Ernest
 Ebrahim Ben Davood Elishu
 Eshaghian*
 Etra Family
 Sara* and Kalman* Fainzylber
 Anne* and Isidore* Falk
 Rose C. Falkenstein*
 Lee and Jeffrey J. Feil

*Of blessed memory

Feil Family Foundation
 Abraham* and Lillian* Feinberg
 Betty and Sheldon* Feinberg
 Harold and Isabel Feld
 Charitable Trust
 Benjamin B. Ferencz
 Estelle and Eugene* Ferkauf
 Nathan* and Vivian* Fink
 Maria* and Joel* Finkle
 Jennifer* and Emil Fish
 Gwen and Lester* Fisher
 Martin A.* and Emily L. Fisher
 Dr. Jack Fishman*
 Dr. Stephen H. Floersheimer*
 Leo* and Florence Forchheimer
 Leo and Julia Forchheimer Foundation
 The Ford Foundation
 George* and Elizabeth* Frankel
 Estate of Charles Friedberg
 Max L.* and Sadie* Friedman
 Rose and Philip Friedman
 Eugenie* and Leon* Fromer
 George J. Fruhman, M.D.*
 Sol and Hilda Furst Foundation
 Violet* and Gerald* Furst
 Michael M. and Barbara Gamson
 Estate of Irene Geller
 Brenda and Samuel Gewurz
 Debbie and Elliot Gibber
 Joseph* and Faye* Glatt
 Drs. Felix and Miriam Glaubach
 Jacob Glueck*
 Basheva and Murray Goldberg
 Rachel* and Samuel H.* Golding
 Samuel H.* Golding and
 Jerrold R. Golding
 Edna S. and David Goldman
 Horace W. Goldsmith*
 Horace W. Goldsmith Foundation
 The Abraham and Mildred Goldstein
 Charitable Trust
 Roslyn and Leslie* Goldstein
 Ruth and I. Lewis* Gordon
 Diana Gordon and
 Alexander Tsigutkin
 Mr. and Mrs. Benjamin Gottesman*

D.S. and R.H. Gottesman Foundation
 David S.* and Ruth L. Gottesman
 Lawrence Gralla*
 Shirley* and Milton* Gralla
 Jeanne Gray*
 Morris (Moshe)* and Charlotte* Green
 Max* and Marion* Grill
 Robyn and Shukie Grossman
 Ronald* and Ethel* Gruen
 Leonard and Chani Grunstein
 Caroline* and Joseph S.* Gruss
 The Gruss Lipper Family Foundation
 Abraham S.* and Irene* Guterman
 Raymond* and Bettie* Haas
 Arie* and Eva* Halpern
 Sam* and Gladys Halpern
 Susan U. Halpern
 Estate of Irma Hamburger
 Marilyn C. and Jerry S.* Handler
 Fran and Mel Harris
 Benjamin and Beth Heller
 Fanya Gottesfeld Heller*
 Terri and Andrew Herenstein
 Erwin* and Madeleine* Herling
 Janet and Arthur Hershaft
 Albert Herskovits and Korda* Caplan

Samuel* and Ronnie Heyman
 Mimi* and Howard* Hirsch
 Estate of Irma T. Hirschl
 Dr. Rivkie and Mr. Lance Hirt
 Janet and Lior Hod
 Shimmie and Alissa Horn
 Carl C. Icahn
 E. Billi Ivry*
 Joel Jablonski*
 Harry and Rose Jacobs Foundation
 The Yolanda G. Jacobs Trust
 Pauline Perlmutter Jarett*
 Erica* and Ludwig* Jesselson
 Jesselson Family
 Jewish Foundation for Education
 of Women
 Debbie and Howard Jonas & Family
 Jim Joseph Foundation
 Sandra and Nathan S. Kahn
 Joan and Ernest* Kalman
 Rae* and Henry* Kalman
 Maurice S. Kanbar*
 Estate of Arthur Kaplan
 Adina and Marcos D.* Katz

*Of blessed memory



Ida* and Louis* Katz
 Jed W. Katz
 Marilyn and Stanley M. Katz
 Mordecai D.* and Dr. Monique C. Katz
 Henry and Elaine Kaufman Foundation
 Mildred* and Bernard H.* Kayden
 W.M. Keck Foundation
 The Joseph P. Kennedy, Jr. Foundation
 Joseph Kerzner*
 Kestenbaum Family Foundation
 Martin Kietoff*
 Lucille* and Edward A.* Kimmel
 F.M. Kirby Foundation
 The E.P. and Roberta L. Kirschner Trust
 George and Adele* Klein
 Marc* and Doris Kolber
 Sarah Korein*
 Saul and Mira* Koschitzky and Henry and Julia* Koschitzky
 Estate of David R. Koston
 Estate of Aileen S. Kraditor
 Lola* and Saul* Kramer
 Tamara* and Charles A. Krasne
 Rina and Henry Kressel
 The Joan B. Kroc Foundation
 Doris* and Dr. Ira* Kucin
 Fran and Rabbi Jonah Kupietzky
 Seryl and Charles Kushner
 Emily Fisher Landau
 Mildred* and William S.* Lasdon
 Linda and Murray Laulich
 Dr. Joseph Lebovic*
 Thomas H. Lee* and Ann G. Tenenbaum
 Bruce Leff
 Ethel* and Samuel J.* LeFrak
 Irwin* and Silvia* Leiferman
 Estate of Bertram Leslie in memory of Nathan and Julia Levy
 Dorothy Drexler Leuw*
 Anne* and Gabriel* Levine
 Blanche R. Levine*
 Rhoda Miriam Levine
 The Levitt Foundation
 Benjamin J.* and Anna E.M.* Levy

Betty* and Norman F.* Levy
 Jacob P.* and Estelle* Lieberman
 Marcia and Ronald Lissak
 Frances* and Herman* Lopata
 Jeffrey H. Loria
 Evlynn* and Max M.* Low
 Evelyn and Joseph I.* Lubin
 H. Bert* and Ruth* Mack
 The Honorable Earle I. Mack
 Debra and David Magerman
 Gela, Leon and Michael H. Maneli Foundation
 Ira Marienhoff*
 Lucille P. Markey Charitable Trust
 Estate of Marie Markus
 The G. Harold and Leila Y. Mathers Charitable Foundation
 Maxwell R. Maybaum*
 Mazer Family
 Ceil* and Joseph* Mazer
 Estate of Arthur Mendheim
 Ursula* and Hermann* Merkin
 Ruth Merns
 Sydelle and Arthur I.* Meyer
 Micah Philanthropies,
 Ann and Jeremy Pava, Trustees
 Charles R. Michael
 Jakob Michael*
 Estate of Bernard Milch
 Diane* and Ira M. Millstein
 Marco* and Louise* Mitrani
 Selma* and Dr. Jacques* Mitrani
 Ruth* and David* Mitzner
 Dr. Riva Collins and Ira Mitzner Families
 Benedict and Arlene Morelli
 Estate of Arthur P. Morgan
 Samuel Morganroth*
 Samuel* and Claire A.* Mozel
 Ruth* and Hyman* Muss Family
 Joshua L. and Harriet Muss
 Stanley H. and Toby Muss
 Drs. Jack M.* and Gitta Nagel
 Marnie and David Nagel
 Dr. Abraham Naymark*
 Sammy* and Aviva Ofer

Sylvia* and Robert S.* Olnick
 Sidney L.* and Miriam K.* Olson
 Frank Pecenic*
 Arnold S. Penner* and Madaleine Berley
 Dr. Joseph A. Penner
 The Laura and Isaac Perlmutter Foundation
 The Carroll and Milton Petrie Foundation
 Pew Charitable Trust
 Laura and John J. Pomerantz
 Estate of Beatrice Potter
 The Price Family Foundation
 Terry* and Asriel* Rackow
 Estate of Yolaine G. Randall
 Estates of Benjamin, Minna, and Robert A. Reeves
 Estate of Alfred H. Reich
 Estate of Gertrude E. Reicher in memory of Eleazer and Feige Reicher
 Ingeborg and Ira Leon Rennert
 Jack* and Pearl* Resnick
 Judith and Burton P.* Resnick
 Charles H. Revson*
 George Richmond, MD*
 Estate of Zelman Gordon Rips
 The Ritter Foundation
 Dr. Marcia Robbins-Wilf
 Robin Hood Foundation
 Evelyn* and Israel* Rogosin
 The Aaron, Martha, Isidore N. and Blanche Rosansky Foundation
 Estate of Stella Rose
 Rita* and Philip* Rosen
 Judy R.* and Alfred A.* Rosenberg
 Vivian Glueck Rosenberg and Henry Rosenberg
 Wallace D. Ross*
 Hedwig* and Ernst* Roth
 Julia* and Eli L.* Rousso
 Louis E.* and Dora* Rousso
 Lawrence Ruben, Esq.*
 Estate of Jack Rubin

*Of blessed memory

Lewis J. Rubin, MD
 Florence* and Irving* Rubinstein
 Robert Eli and Renée Rubinstein
 Estate of Lila Rudin
 The Rudin Family
 Bernice L.* and Cecil* Rudnick
 Milton Rybkowski*
 The Family of Chella and Moise* Safra
 Edmond J. Safra*/Republic National Bank of New York
 Anita* and Jack Saltz
 Cindi and David Samson & Family
 Maurice H. Saval*
 Dorothy* and David I.* Schachne
 Frances and Daniel* Schamarock
 Fiona and Michael Scharf
 Edythe* and Sol* Scharfstein
 Estate of Anne Scheiber
 Sol T.* and Hortense* Scheinman
 Betty* and Herbert H.* Schiff
 Fredericke* and Lawrence* Schleifer
 Helen* and Irving* Schneider
 Henry R. Schnitzer*
 Geraldine Schottenstein
 Jay and Jeanie Schottenstein
 Jerome*, Saul*, Alvin* Schottenstein Families
 Mozes S. Schupf Foundation
 David* and Irene* Schwartz
 The Beatrice and Samuel A. Seaver Foundation
 David and Fela Shapell Family Foundation
 Ruth and Irwin* Shapiro
 Dorothy* and Martin* Silverman
 Estate of Nina Silverman
 Patty and Lorin Silverman
 Stanley* and Raine Silverstein
 Sydel* and Michael* Singer
 The Paul E. Singer Foundation
 Branna* and Irving* Sisenwein
 The Skirball Foundation
 The Smart Family Foundation
 Marilyn and Herbert* Smilowitz
 Estate of Sidney Solid
 Sheldon H. Solow*

Helen* and Irving* Spatz
 The Helen & Irving Spatz Foundation
 Estate of Benjamin and Frances Sperling
 Ronald P. Stanton*
 Estate of Harold R. and Lillian Stein
 Estate of Helen Stein
 Judith* and Dr. Edward L.* Steinberg
 Jeffrey J. Steiner*
 Ghity* and Max* Stern
 Leonard N. Stern
 Estate of Margarethe I. Stern
 Stanley E.* and Simha* Stern
 Johanne and Norman Sternthal
 Louise and Michael Stocker
 Stone-Sapirstein-Weiss Family
 Irving I. Stone Support Foundation
 Zahava and Moshael J. Straus
 Rosa* and Harry* Strygler
 Leo* and Rachel* Sussman
 Gerald* and Mary Swartz
 Sy Syms Foundation
 Joseph Tanenbaum*
 Benjamin Teitel*
 Florence* and Herbert* Tenzer
 Laurie M. Tisch Illumination Fund
 Sheryl and Daniel R. Tishman
 Estate of Joseph Tonkin
 Estate of Dr. Sadie Edith Trachman and Dr. Miriam E. Trachman
 Louis A. Tuvin*
 Siegfried* and Irma* Ullmann
 Milton* and Pearl* Unger
 Unterweiser Estate
 Heidi and Jack Varon
 Jack D.* and Doris* Weiler
 Kathy and Samuel G. Weinberg
 Evelyne* and Murray* Weinstock
 Jacob D.* and Bronka* Weintraub
 The Jesse S. and Gloria Weissberg Family
 Sidney Weisner*
 Morry and Judith Weiss
 Edna* and K.B.* Weissman
 Esther and Louis* Wertenteil
 Judy and Josh S. Weston

Harry* and Judith* Wilf
 Joseph* and Elizabeth Wilf
 Leonard and Beth Wilf
 Mark and Jane Wilf
 Zygmunt and Audrey Wilf
 Benjamin and Susan Winter
 Elliot K. and Nancy Wolk
 The Wollowick Family Foundation
 Estate of Dr. Benjamin Wolstein
 Deena and Harvey Wrubel
 Wurzweiler Foundation
 David* and Grace* Yagoda
 Rose* Yavarkovsky and Ira* Yavarkovsky
 Yeshiva University Women's Organization
 Lori and Alan Zekelman
 Zises Family
 Dr. and Mrs. Jonathan Zizmor
 Wendy Zizmor
 Anita G. Zucker
 Lenore* and Larry* Zusman
 Benjamin Zysman*
 David H. Zysman*
 Anonymous (23)

*Of blessed memory



ADMINISTRATION

Rabbi Dr. Ari Berman
President

Selma Botman, Ph.D.
Provost and Vice President for Academic Affairs

Herbert C. Dobrinsky, Ph.D.
Vice President of University Affairs

Ellen Finkelstein
Chief Strategy Officer for the Office of Institutional Advancement

Patrick Gallagher
Vice President of Administrative Services and Chief Administrative Services Officer

Andrew J. Lauer, Esq., JD, LL.M.
Vice President for Legal Affairs, Secretary and General Counsel

Susan Meyers
Vice President and Chief Advancement Officer in the Office of Institutional Advancement

Mike Schreiber
Vice President of Business Affairs and Chief Financial Officer

Julie Schreier, MBA
Vice President and Chief of Staff

Doron Stern, MBA
Vice President of Communications and Chief Marketing and Enrollment Officer

Danielle Wozniak, Ph.D.
Vice President for Global Strategy and Business Development

ACADEMIC LEADERSHIP

Sara Asher, PsyD
Dean, Undergraduate Student Life

Karen Bacon, Ph.D.
The Mordecai D. Katz and Dr. Monique C. Katz Dean of Undergraduate Faculty of Arts and Sciences

Cantor Eric S. Freeman, BA
Associate Director, Philip and Sarah Belz School of Jewish Music

Dr. Erica Brown
Vice Provost for Values and Leadership and Director of the Sacks-Herstein Center

Paul Glassman, MArch, MS, MBA
Director of University Libraries

Harris Goldstein, M.D.
Interim Dean, Albert Einstein College of Medicine

Leslie Halpern, Ph.D.
Dean, Ferkauf Graduate School of Psychology

Rabbi Yosef Kalinsky, Ph.D.
Dean, Undergraduate Torah Studies

Melanie Leslie, JD
Dean, Benjamin N. Cardozo School of Law

Randy Magen, MS, Ph.D.
Dean, Wurzweiler School of Social Work

Yael Muskat, PsyD
Dean of Mental Health and Wellness and Director of the Counseling Center

Chaim Nissel, PsyD
Vice Provost, Dean of Graduate Student Life

Rona M. Novick, Ph.D.
Dean, Azrieli Graduate School of Jewish Education and Administration

Rabbi Menachem Penner, BA
The Max and Marion Grill Dean, Rabbi Isaac Elchanan Theological Seminary

Paul Russo, Ph.D.
Vice Provost, Dean, Katz School of Science and Health

Shoshana Schechter, MA
Associate Dean of Torah Studies, Stern College for Women Director, Mechina Program

Tim Stevens, Ph.D.
Deputy Provost MSCHE ALO, NYSED CEO-Liaison, NC-SARA Primary Contact

Noam Wasserman, Ph.D.
Dean, Sy Syms School of Business

BOARD OF TRUSTEES

Ira Mitzner
Chairman

Robert M. Beren*
David S. Gottesman*
Dr. Henry Kressel
Moshael J. Straus
Morry J. Weiss
Chairmen Emeriti

Ludwig Bravmann*
Vice Chairman Emeritus

Philip Friedman
Elliot Gibber
Michael D. Katz
Vice Chairmen

Michael Jesselson
Treasurer

President Ari Berman
Julius Berman
Marvin S. Bienenfeld
Marjorie Diener Blenden
Ira Dizengoff
Michael Gamson
Dr. Felix L. Glaubach
Alan E. Goldberg
Benjamin Heller
Andrew Herenstein
Lance Hirt
Mitchell R. Julis
Senator Joseph Lieberman
Matthew J. Maryles
Joshua L. Muss
David J. Nagel
J. Philip Rosen
Jay Schottenstein
Irwin Shapiro*
Mark Silber
Mark Wilf
Zygmunt Wilf
Shira Yoshor

S. Daniel Abraham
Hal H. Beretz*
J. Morton Davis
Jay H. Zises
Honorary Trustees

Dr. Jayne G. Beker
Jack A. Belz
Sender Z. Cohen
David Eshaghian
Trustees Emeriti

Richard M. Joel
President Emeritus

*Of blessed memory



Yeshiva University

500 West 185th Street
New York, NY 10033
646.592.8400

www.yu.edu